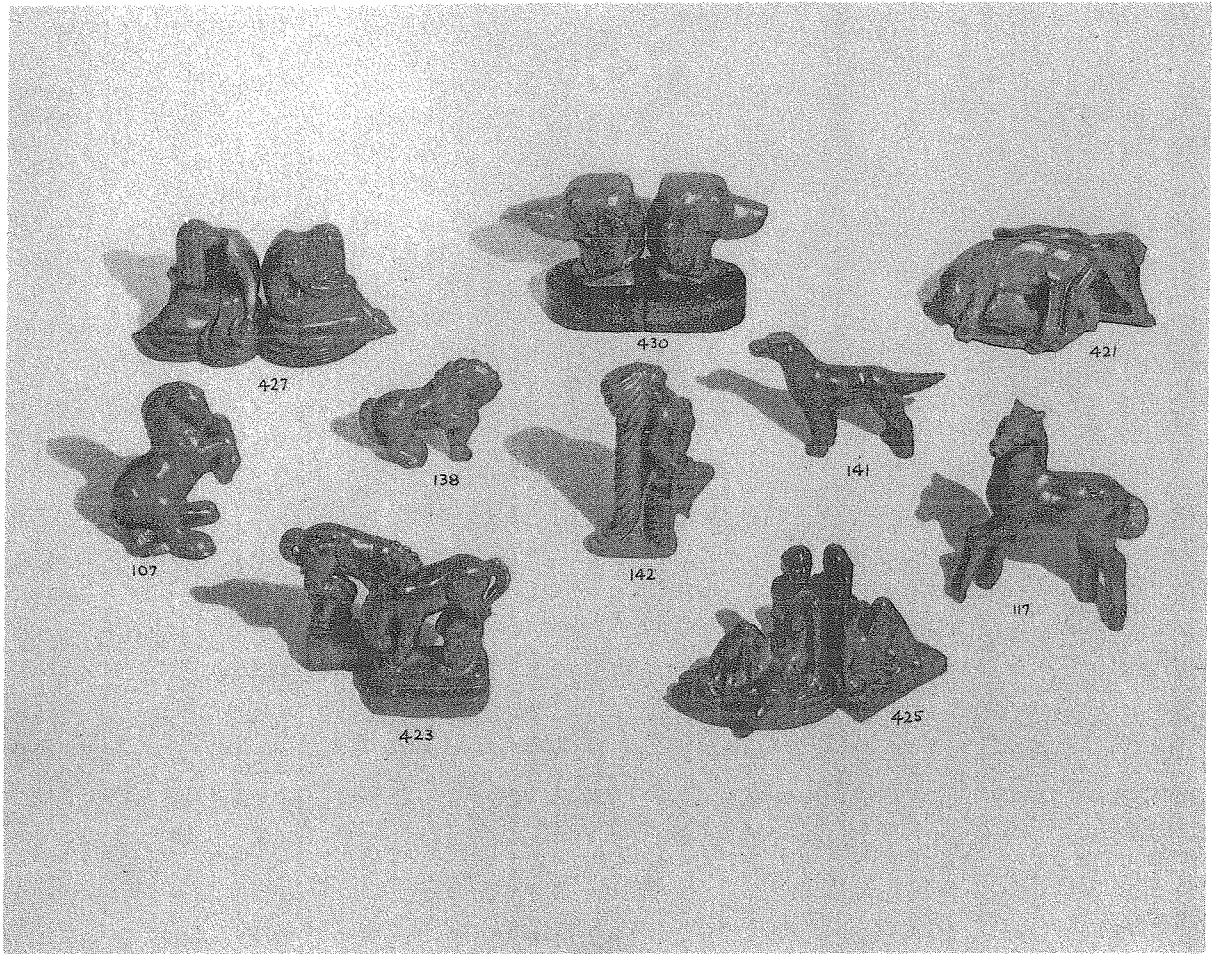


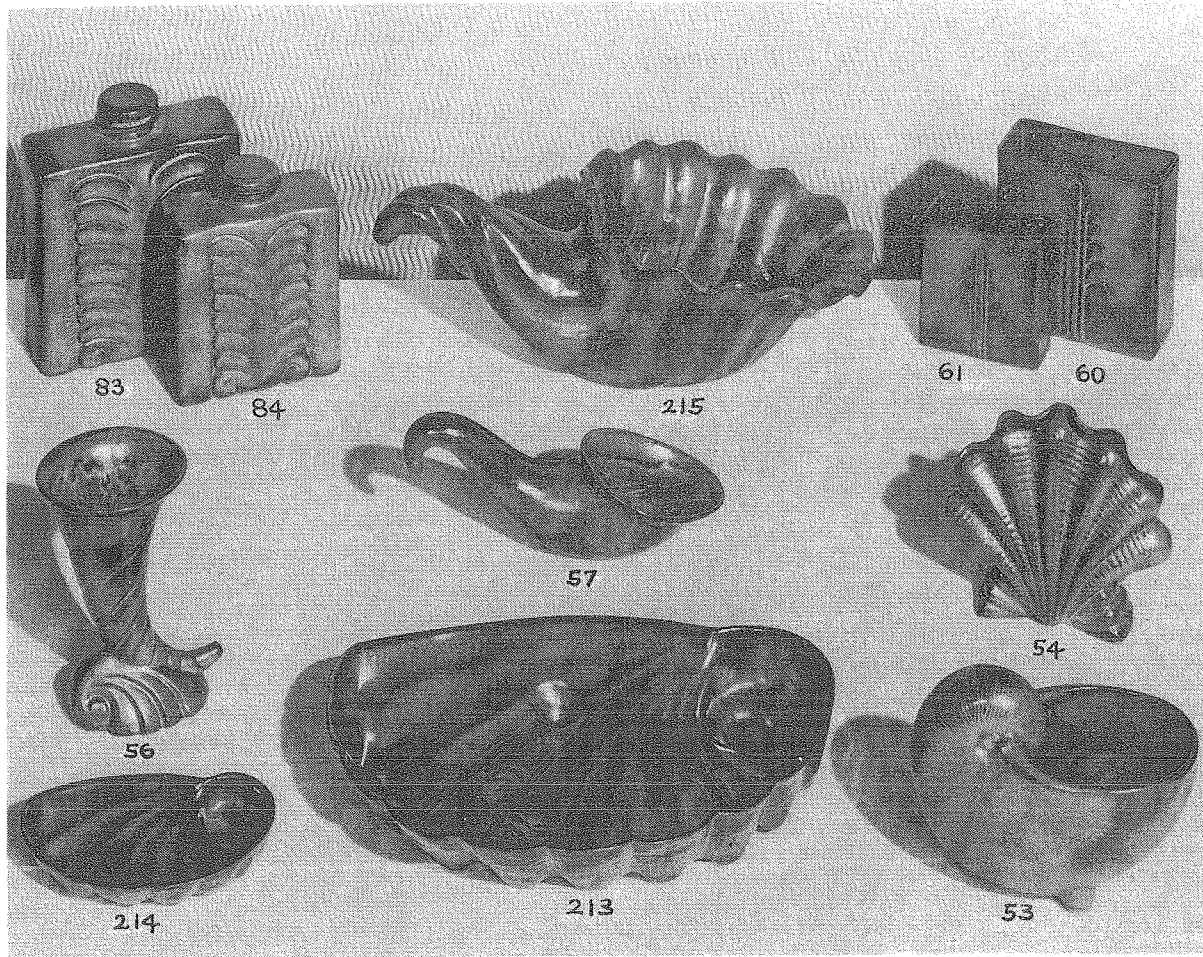
FINE

CERAMICS

FRANKOMA



- | | |
|--|---|
| <p>427 The "Dreamer" bookend. A figure composition truly designed to make a good bookend. Notice how beautifully the back is modeled.....</p> <p>430 "Pat," Red Irish setter. Bookends.....</p> <p>421 Pacing Ocelot bookends.....</p> <p>138 Prancing Percheron horse. Somewhat stylized, but a good design for pottery. (A circus horse).....</p> <p>141 English setter dog.....</p> | <p>142 Commanche Indian Chief.....</p> <p>107 Rearing Clydesdale horse.....</p> <p>117 Prancing colt. So full of life, everyone loves him</p> <p>423 Bucking Broncho bookends. So Western they are kicking the cacti.....</p> <p>425 The "Mountain Girl" bookends.....</p> <p>425 X "Mountain Girl" figure for flower bowls. Each</p> |
|--|---|

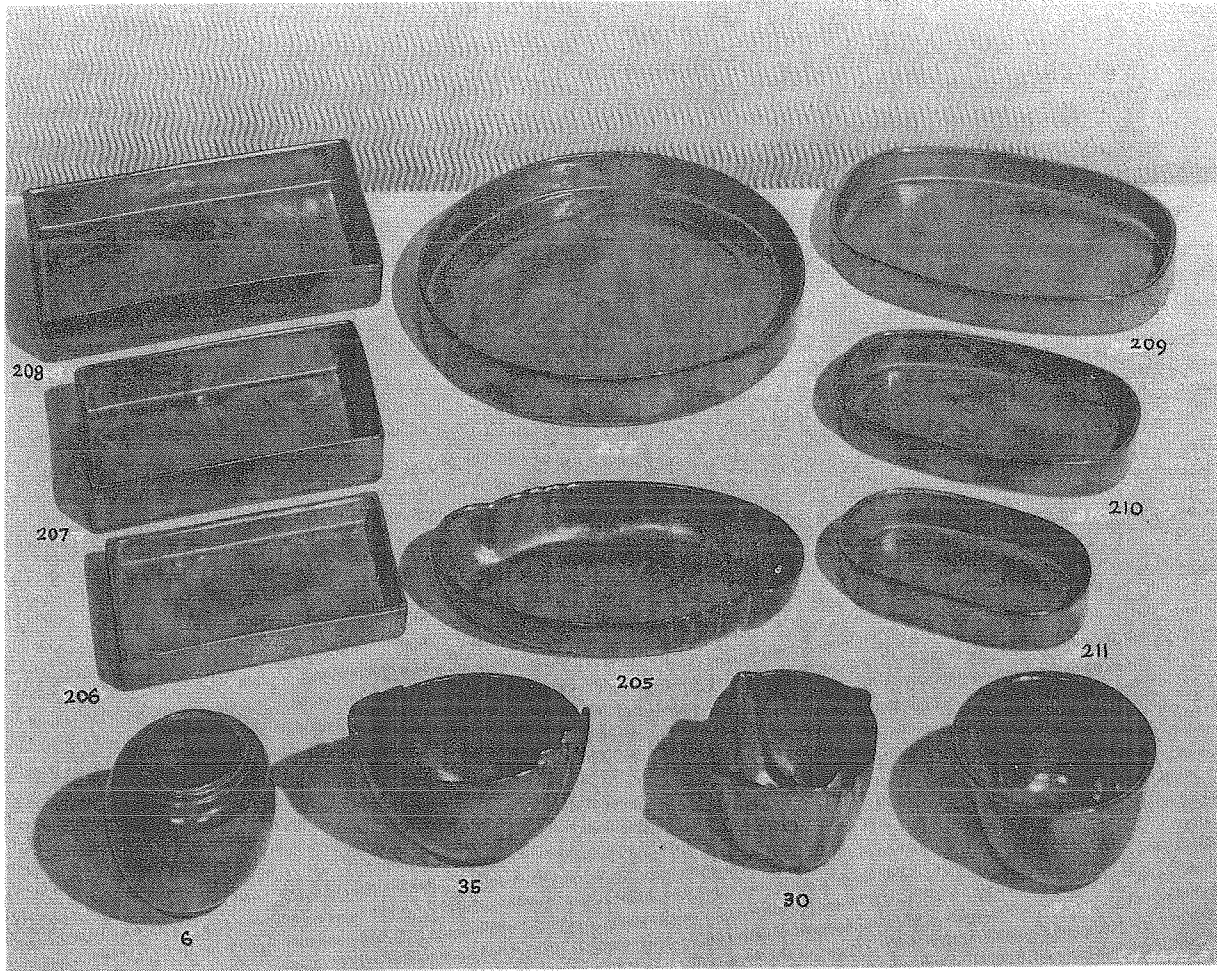


- | | |
|--|--|
| <p>83 2-quart decanter. Your fingers fit into the design and keep it from slipping in the hand. Refrigerator jug or vase....</p> <p>84 1-quart decanter</p> <p>215 Large cornucopia that can be used for flowers as well as fruit.....</p> <p>61 Pillow vase</p> <p>60 Large pillow vase, 6½".....</p> <p>56 Tall cornucopia, lovely in pairs. 7".....</p> | <p>56K Small cornucopia. Same design as No. 56</p> <p>57 Cornucopia for low arrangements.....</p> <p>54 Fan shell vase, 6".....</p> <p>214 Shell compote ,6".....</p> <p>213 Large shell bowl that is perfect for salads, flowers or fruits, 13".....</p> <p>53 Chambered Nautilus shell vase.....</p> |
|--|--|



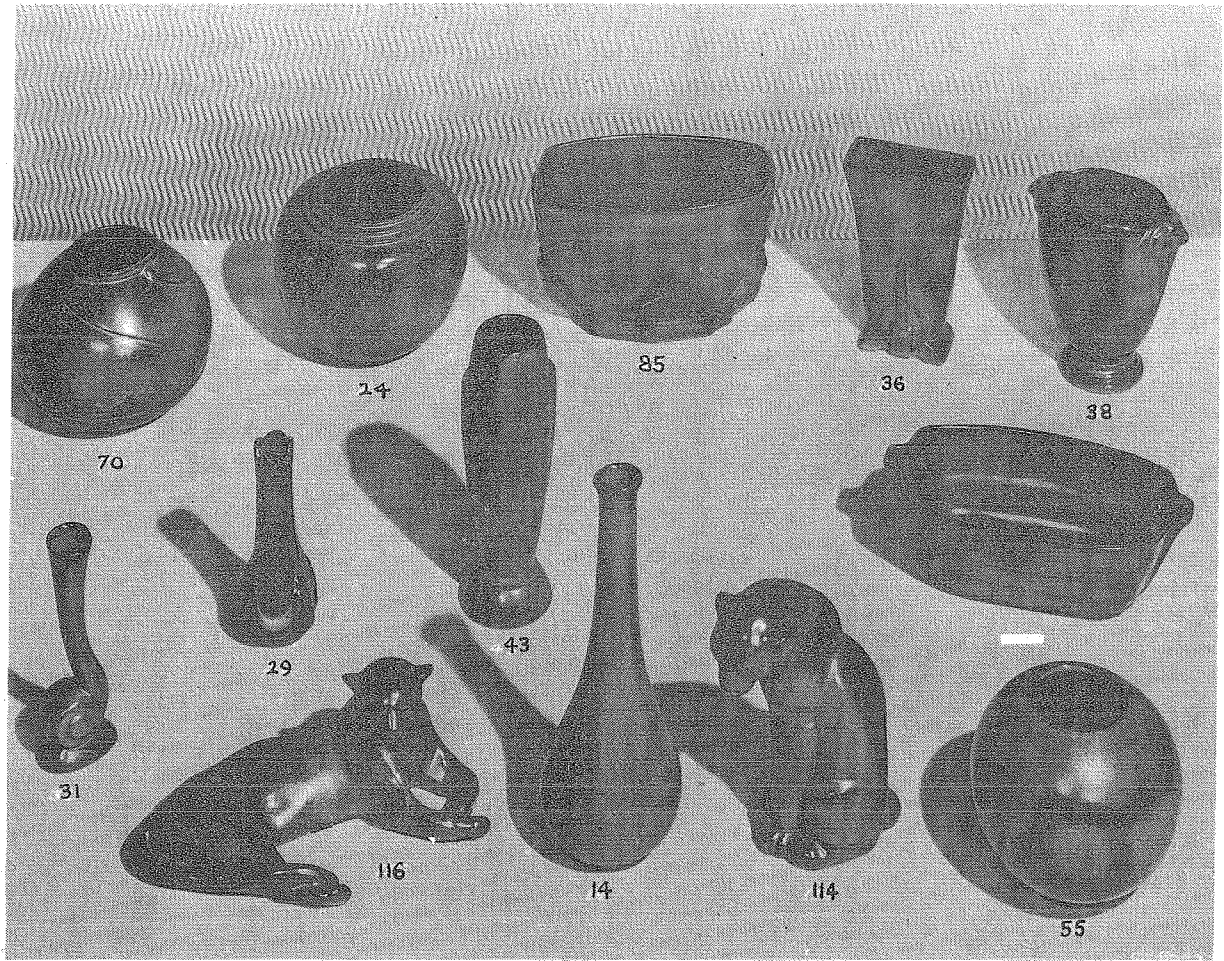
- 75 Round carved vase.....
- 76 Tall mantle vase, 14".....
- 77 Fireside vase with handles. A nice companion for No. 77A on page 12. Each
- 79 Scalloped top vase.....
- 50 Tall round vase. 10". Each.....
- 78 Grecian-type vase, 9". Each.....
- 72 Ribbed oval vase. 9".....

- 113 Dancing figure. This figure is well-sculptured and lovely from any angle. Note the beautiful pattern of her fans on the table
- 80 2-quart, well-balanced pitcher. The lip is hand-trimmed so it will not drip.....
- 80C 9-oz. tumbler to go with No. 80 pitcher. Each
- 66 Large flower designed floor vase. Gracefully flared



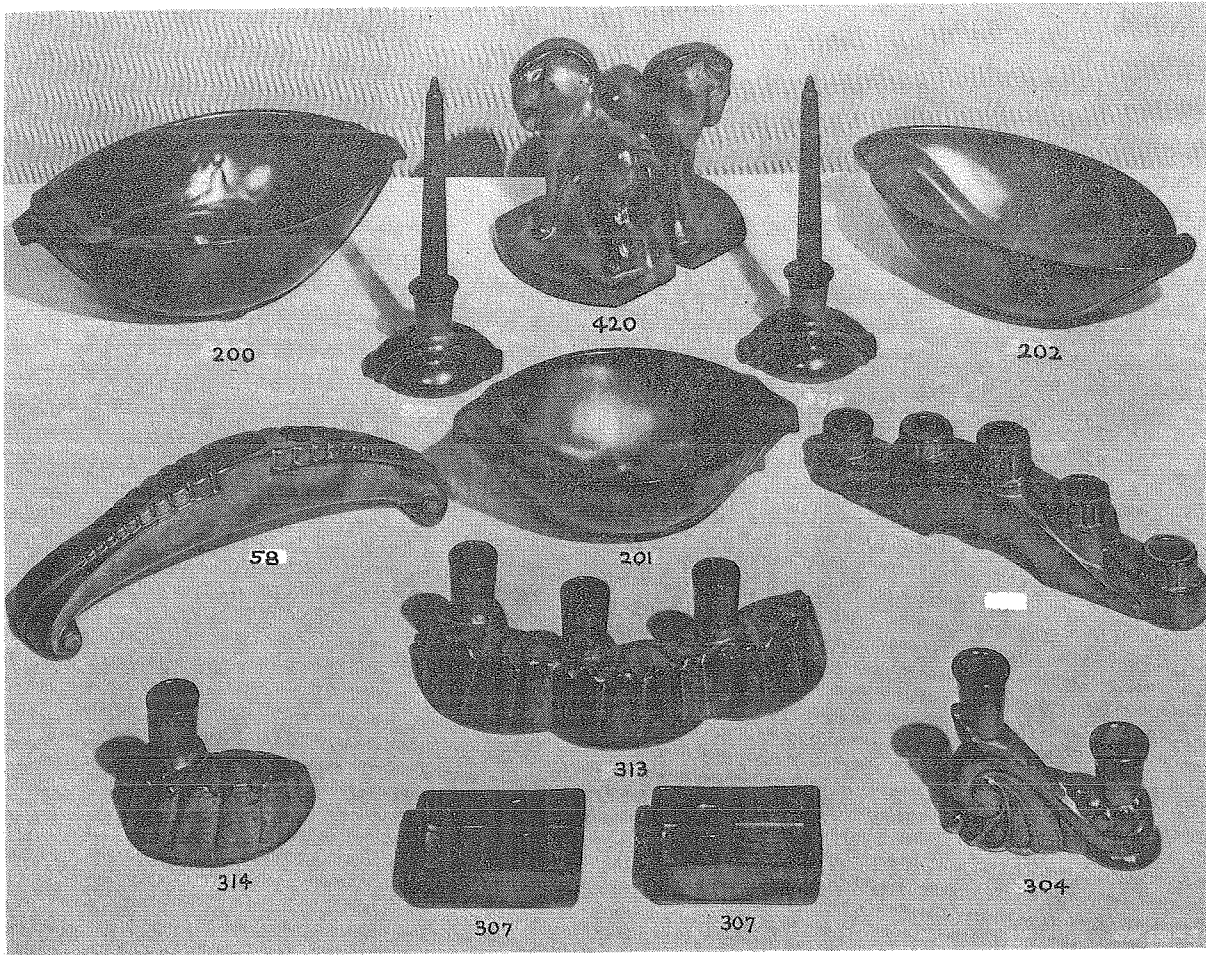
"FLATS" for FLOWERS

208	Rectangular flat bowl, 11".....	210	Oval low bowl, 9".....
207	Rectangular flat bowl, 9".....	211	Oval low bowl, 7".....
206	Rectangular flat bowl, 7".....	6	Round jar, simple in design.....
205	Oriental low bowl, 10".....	35	Occasional bowl for most anything one would want to use it
209	Oval low bowl, 11".....	30	Square occasional bowl



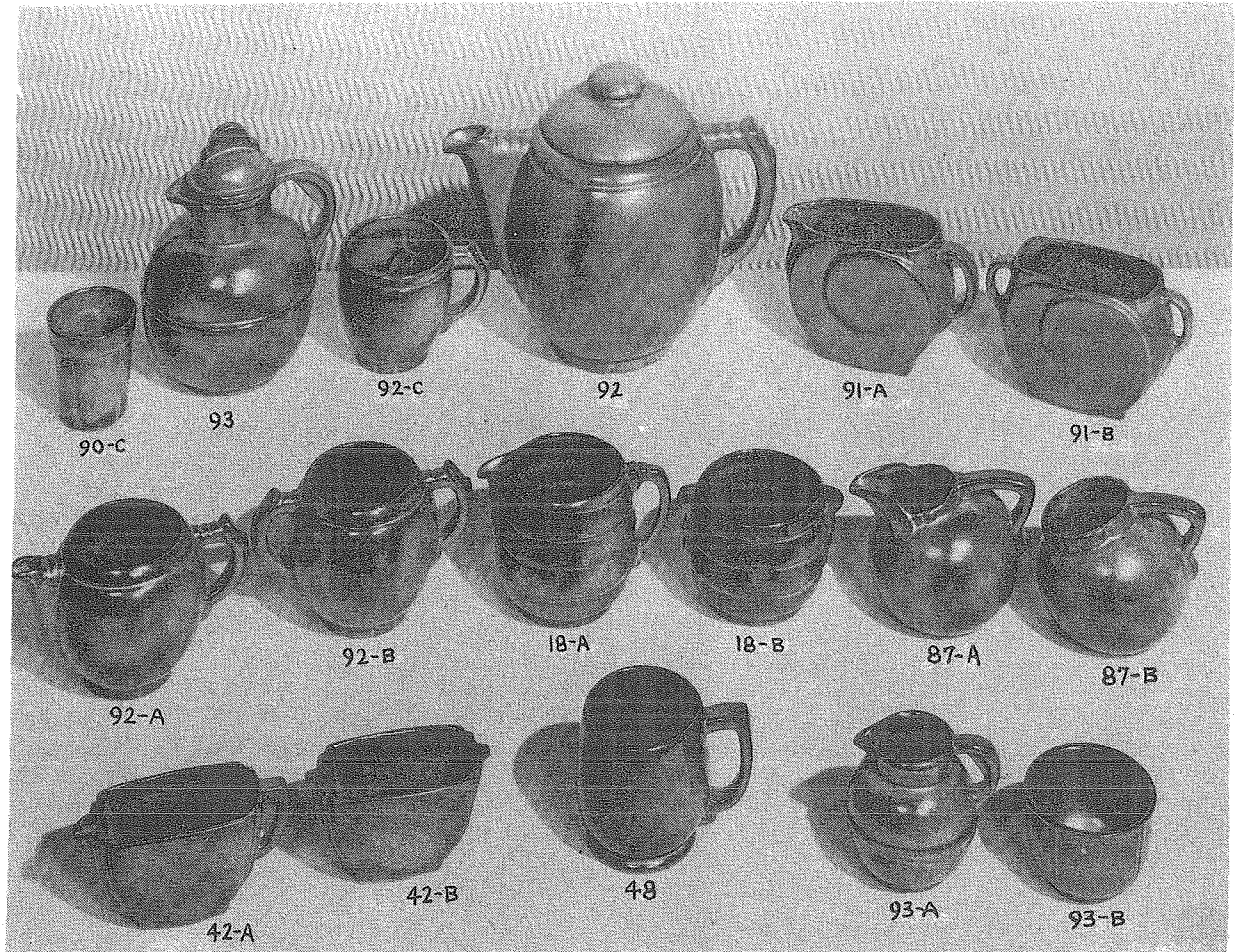
- 70 Round carved jar, 6".....
- 24 Round jar. Simple in shape and design
- 85 A bowl vase with bird design on each end
- 36 Fan-shaped vase, 6".....
- 38 Vase with Ram's head design, 6".....
- 31 Snail bud vase, 6".....

- 29 Bud vase, 6"
- 43 Crocus Bud, bud vase, 8".....
- 116 Reclining Puma
- 14 Bottle vase, 9"
- 114 Seated Puma
- 55 Round ball jar with black foot. Excellent with ivy



OVEN-PROOF BOWLS

- | | | | |
|-----|---|-----|--|
| 200 | An all-purpose 12" bowl, like all Frankoma bowls, can be put in the oven. Nice for flowers as well..... | 313 | Candelabrum for 3. Each..... |
| 201 | Smaller bowl, 10" | 304 | A lovely candleholder that is not only nice with the No. 202 bowl, but looks well with the No. 113 dancing figure on page 3. Pair..... |
| 300 | Candleholder that will match No. 200 and 201 bowls. Pair..... | 307 | Candleholder to match the flat rectangular bowls. Use it on the bridge table with flowers around the candle. Pair.... |
| 202 | 12" oblong bowl. A favorite with all... | 420 | Charger horse bookends. Massive in design, and heavy enough to hold books. Felted. Pair..... |
| 58 | 12" arched centerpiece for short stems or lacy flowers | | |
| 314 | Shell candleholder that matches the No. 213 bowl on page 2, 216 on page 12. Pair | | |



UNUSUAL SUGAR AND CREAMERS

90C 3-oz. fruit juice cup that will make a nice set with No. 90 jug or the No. 93 pitcher

93 25-oz. pitcher with lid.....

92C Cup to match No. 92 tea pot.....

92E Saucer for 92C

92 8-cup tea pot

91ab Sugar and Creamer to match No. 91 pitcher on page 8

92ab Sugar and Creamer to match No. 92 tea pot. Pair

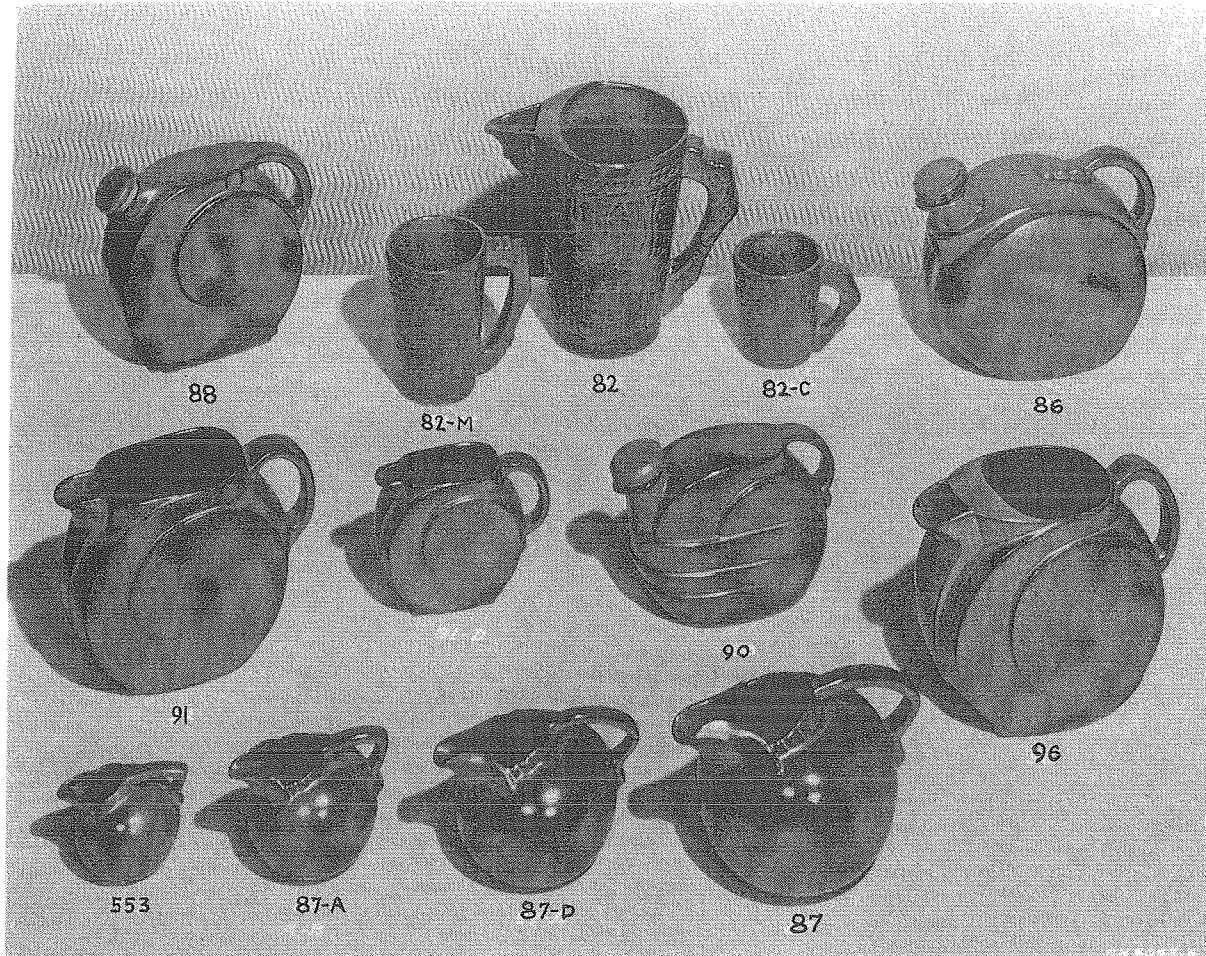
18ab Ringed sugar and creamer.....

87ab Round sugar and creamer.....

42ab Oblong sugar and creamer.....

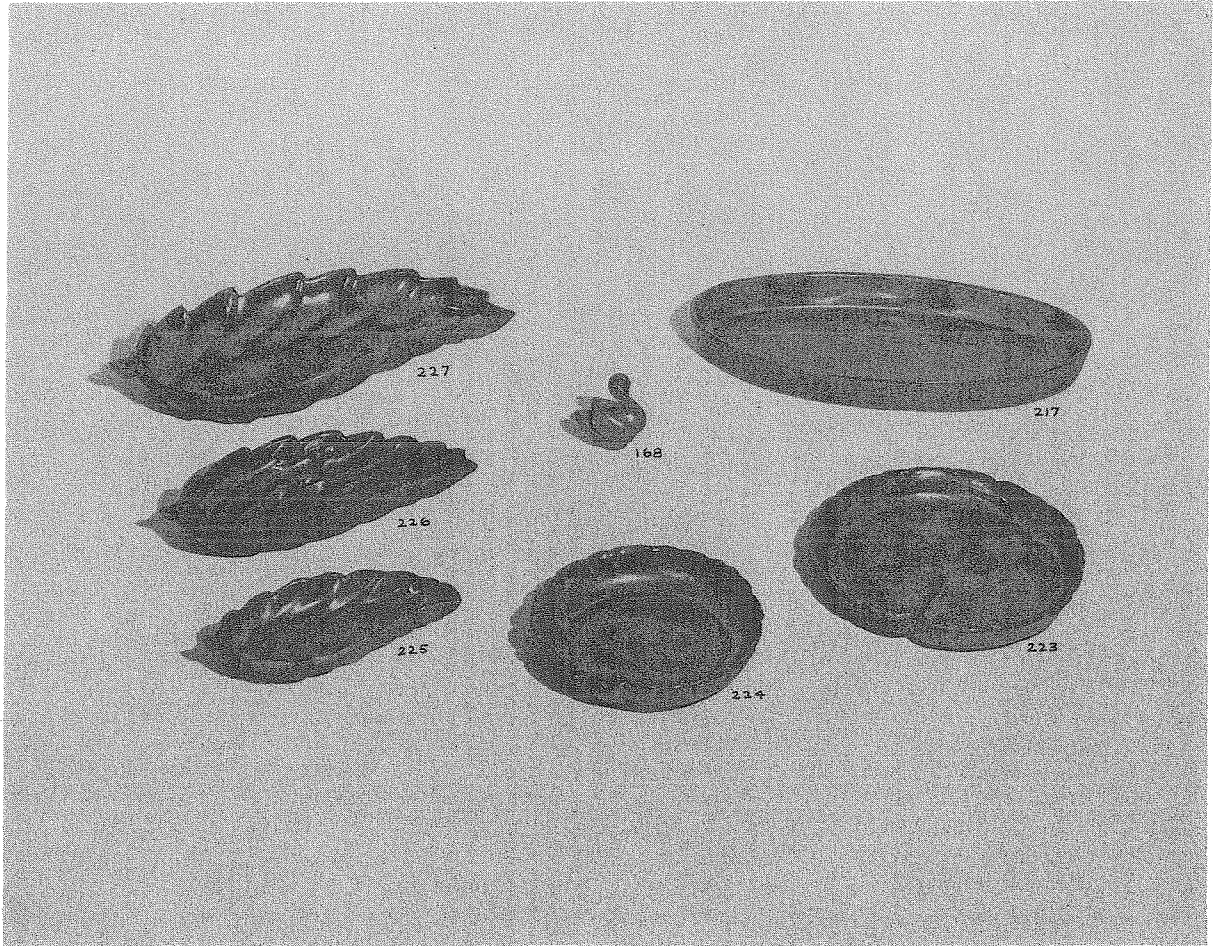
48 Cup. A good baby mug.....

93ab Round sugar and creamer.....



PITCHERS THAT POUR!

- | | | | |
|-----|---|-----|--|
| 88 | 1½-quart refrigerator jug with cork. Very compact | 91 | 50-oz. pitcher |
| 82M | 12-oz. beer mug. Mayan design..... | 87A | 8-oz. pitcher |
| 82 | 1½-quart pitcher with ice guard. Engraved in Mayan design..... | 90 | 1-quart juice jug |
| 82C | 8-oz. mug to match No. 82 pitcher..... | 96 | 2-quart pitcher with ice guard |
| 86 | ½-quart refrigerator jug. Like all Frankoma pitchers the lip is trimmed carefully by hand so it pours well..... | 553 | Miniature pitcher |
| | | 87D | 20-oz. pitcher. Good as syrup pitcher with 87ab and #87 - as waffle set..... |
| | | 87 | 1-quart pitcher. A very convenient size for juice or milk..... |

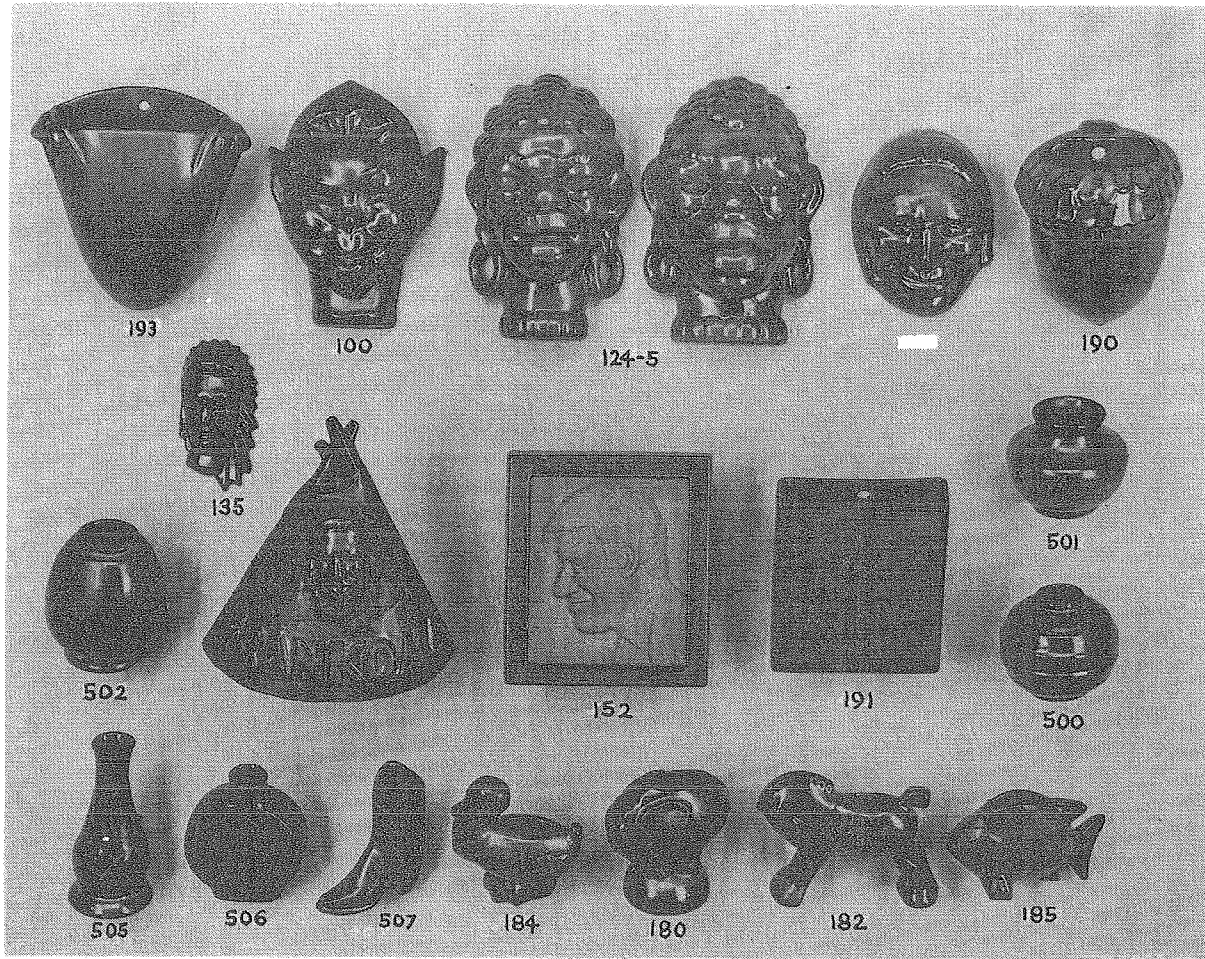


MORE "FLATS"

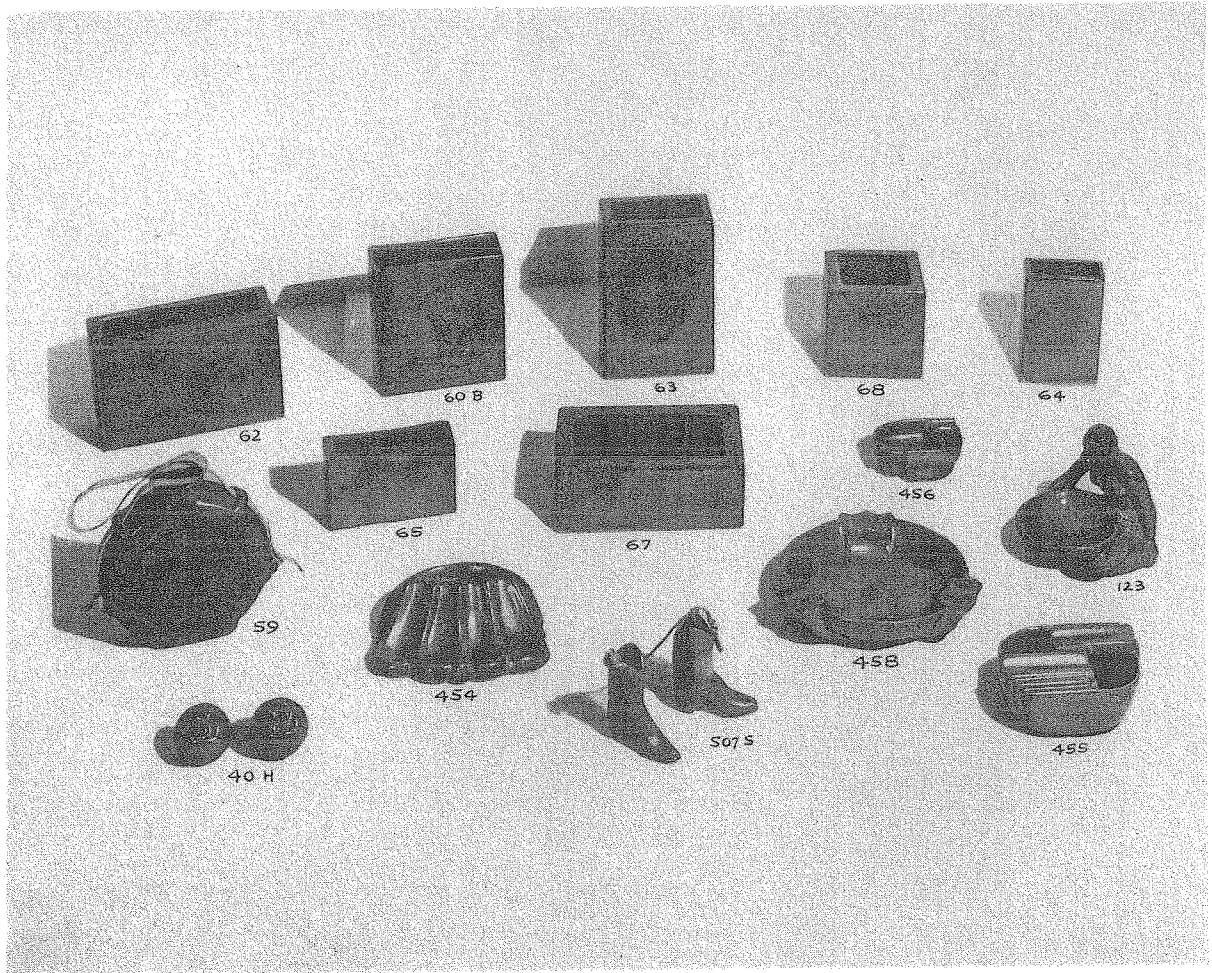
America's Most Popular Centerpieces.

All Frankoma bowls are evenproof.

- | | | | |
|-----|--|-----|---------------------------------|
| 227 | Large willow leaf. 18"..... | 217 | Long oval flower bowl, 18"..... |
| 226 | Medium willow leaf. 11"..... | 223 | Large lily pad bowl, 10"..... |
| 225 | Small willow leaf. 7"..... | 224 | Small lily pad bowl, 6"..... |
| 168 | Swan accessory for flat flower bowls.... | | |

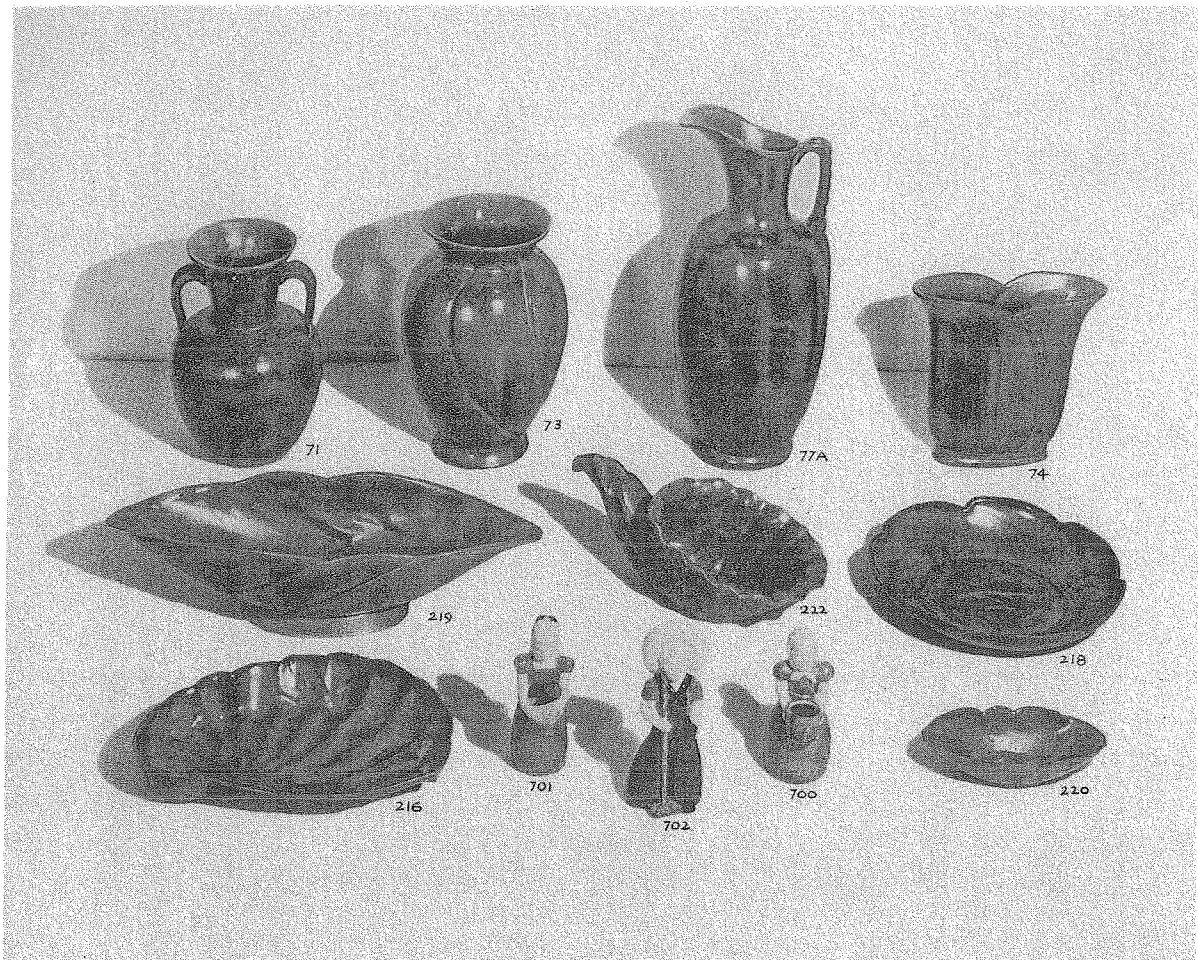


- | | | | |
|-------|--|-----|---|
| 193 | Ram's head wall vase..... | 505 | Bud vase |
| 100 | Peter Pan. He always gets a smile..... | 506 | Indian Thunderbird vase |
| 124 | Negro slave mask - woman | 507 | Western cowboy boot |
| 125 | Negro slave mask - man | 184 | Duck flower holder |
| 190 | Acorn wall vase | 182 | Hobby horse flower holder |
| 191 | Rectangular wall vase | 180 | Elephant flower holder |
| 135 | "Frankoma" Indian wall mask | 185 | Fish flower holder |
| 131-2 | Indian maiden and chieftain - wall
plaques - pair | 152 | Will Rogers' plaque. The portrait is
in the natural clay, embodying some
clay from his own homestead..... |
| 502 | Small vase | 730 | "Phoebe" wall pocket for flowers. Fine
sculpture of a beautiful girl..... |
| 501 | Small low vase | | |
| 500 | Small ringed vase | | |

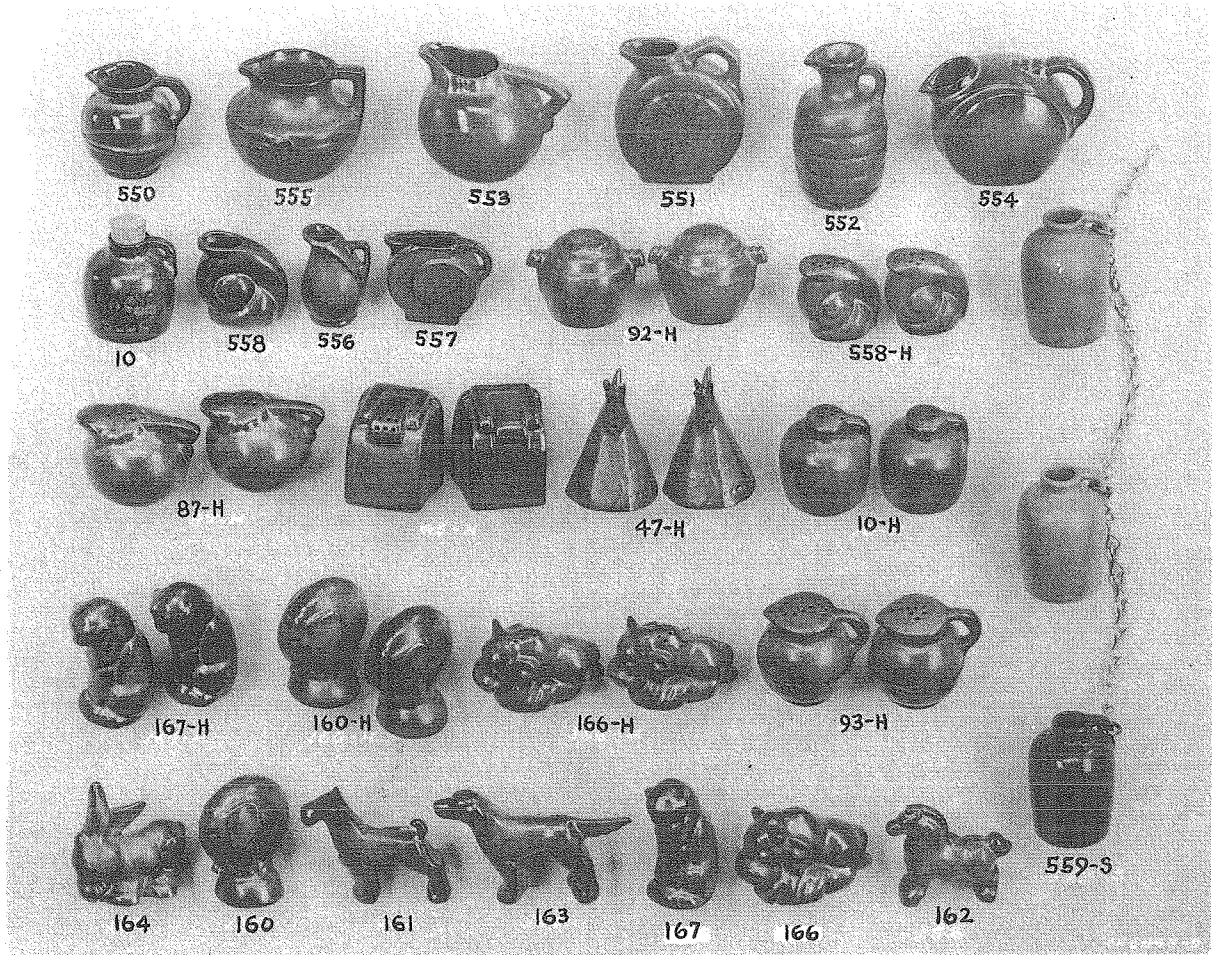


The Best Assortment of "MODERNS" or PILLOW VASES

- | | | | |
|-----|--|------|---|
| 67 | Flat vase. Nice as window box..... | 59 | Flask with Indian design. Leather hanging strap |
| 62 | Vase, 7½" long | 59K | Small Indian designed pitcher. Lovely for ivy |
| 60B | "Flying goose" vase, 6½"..... | 458 | "Governor's" Ashtray. Every Governor has one |
| 63 | Upright pillow vase | 460 | Cocker Spaniel Ashtray. Sleeping dog on large oval ashtray..... |
| 64 | Small upright pillow vase | 454 | 5-pipe, pipe rest |
| 68 | Cube vase, 5" | 123 | Indian Bowl Maker ash tray..... |
| 65 | Vase, 5" long | 40H | Cannon Ball salt and peppers..... |
| 456 | Cigarette ash tray in modern design. Deep enough to hold plenty of ashes.... | 507S | Two cowboy boots on leather hanger. Clever with ivy |
| 455 | An ash tray that can be set any place, and ashes will not blow out | | |

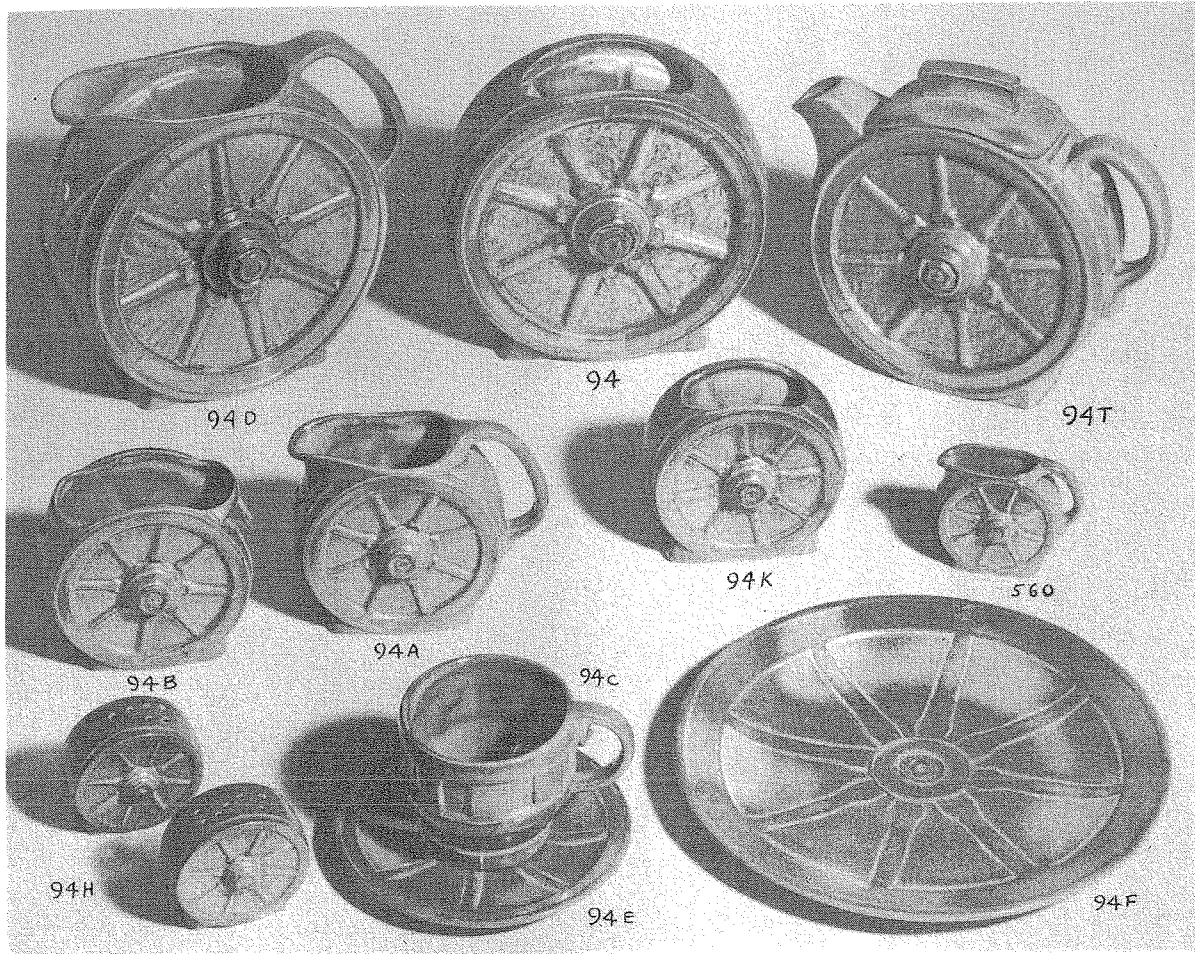


- | | | | |
|-----|--|-----|--------------------------------------|
| 73 | Large spiral carved vase, 12"..... | 220 | Small bowl to match No. 219..... |
| 71 | Leaf handled vase, 10"..... | 222 | Medium Horn of Plenty..... |
| 74 | "Wheat" vase | 218 | Round bowl, spiral carved, 12"..... |
| 77A | Fireside pitcher. A companion piece
for No. 77 vase on page 3..... | 216 | Medium Abalone shell bowl, 11"..... |
| 219 | Large center-piece bowl. Especially
designed for salads. Oven-proof | 700 | Flower girl, 5". Hand painted..... |
| | | 701 | Gardener girl, 5". Hand painted..... |
| | | 702 | Gardener boy, 5". Hand painted..... |



PITCHERS — SALT & PEPPERS

550	Small pitcher	47H	Teepee salt and pepper
555	Indian Thunderbird pitcher.....	167H	Cat salt and pepper
553	Round, small pitcher.....	160H	Elephant salt and pepper
551	Indian Aztec designed pitcher.....	166H	Bull salt and peppers
552	Ringed pitcher	93H	Guernsey jug salt and peppers
554	Jug pitcher	164	Donkey, miniature
10	"Uncle Slug" jug	160	Elephant, miniature
558	Snail miniature pitcher.....	161	Terrier dog, miniature
556	Miniature pitcher	163	English setter dog, miniature
557	Curved flat min. pitcher	162	Trojan horse, miniature
92H	Barrel salt and pepper	559S	Three jugs on a leather thong.....
558H	Snail salt and pepper	167	Seated ocelot, miniature.....
87H	Ball salt and pepper	166	Sitting bull, miniature
10H	Jug salt and pepper		



"WAGON WHEELS"

- | | |
|-------------------------------------|---|
| 94D 1½ Qt. Pitcher | 94E 5½" Saucer |
| 94 Large Vase | 94F 9" Plate |
| 94T 4-cup Tea Pot | 94K 3½" Small Vase |
| 94ab 10-oz. Sugar and Creamer | 560 Miniature Pitcher |
| 94H Salt and Peppers | 94X Bowl. Useful for soup, chili or as cas- |
| 94C 6-oz. Tea Cup | serole. Bake-proof |

FRANKOMA POTTERIES, Inc., has been recognized in the field of Ceramic Art since 1933. It is an outgrowth of pioneering with Oklahoma clay carried on since 1927 by its founder, John N. Frank. This is Oklahoma's only pottery. Its unique styling and coloring have been inspired by its natural setting, "The Home of The Red Man," and the pioneering spirit of the state. Will Rogers loved to call his home. All Frankoma pottery is made entirely of Oklahoma clay.

It is a most durable, tempered pottery, made entirely by Frankoma's own unique processes. Even the loveliest flower and fruit bowls can be used safely for baking. Its pitchers are all dripless, and every piece guaranteed satisfactory. Every piece is an original creation by Frankoma in color and design, and is made FOR THOSE WHO LIKE NICE THINGS!

TERMS:

All prices are F. O. B. Sapulpa, Oklahoma.

No packing, or package charge, on orders over \$15.00.

Frankoma pottery is available in the following colors:

- No. 1 Patina - bronze green, mottled green and bronze.
- No. 3 Rosetone - mottled coral and rose.
- No. 10 Onyx - glossy black, iridescent.
- No. 14 Desert Sand.
- No. 22 Indian Blue - Mottled turquoise, an Indian symbol of Heaven.

HAROLD BROWN
105 N.E. 23rd Street, Okla. City
Southwestern Representative

CLAUDE M. SPERLING
225 Fifth Avenue
New York Representative