

FRANKOMA
POTTERY

1948

CREATORS OF
FINE
CERAMICS

Frankoma Pottery

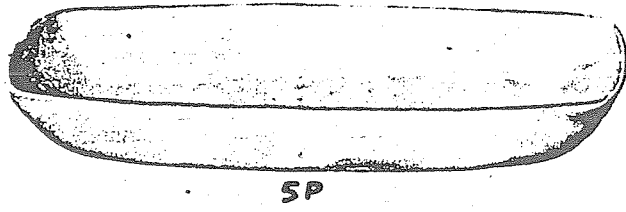
was created for your enjoyment from a small bit of Oklahoma clay found at the foothills of the Arbuckle Mountains.

Frankoma is recognized in the field of Ceramic Art because it has combined the traditional art of the Indian, the spirit of the American Pioneer and the creative tendencies of the Youth of the Great Southwest.

Our beautifully blended colors are produced only by combining this native clay with our glazes. Each piece is originally designed to be a contribution to Fine Ceramics, and to be both useful and beautiful.

This Craft is inspired by its unique Oklahoma background, created by Oklahoma artists, and produced in Oklahoma clay.

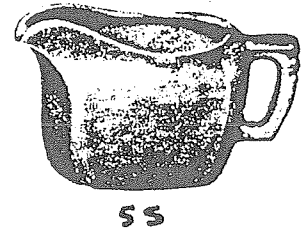
FRANKOMA POTTERY
Sapulpa, Oklahoma



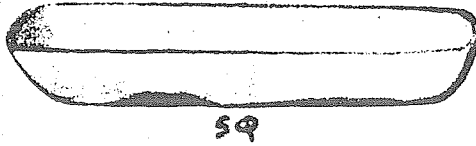
5P



5U



5S



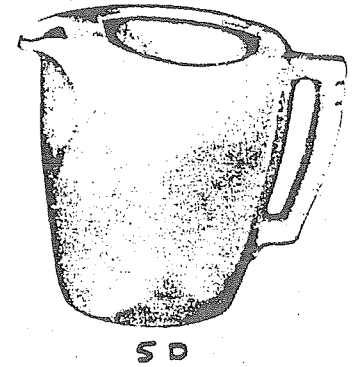
5Q



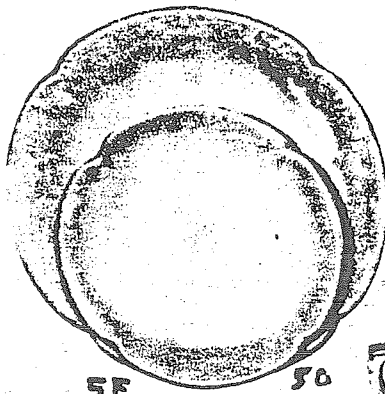
5CL



5M



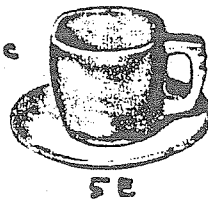
5D



5F

5G

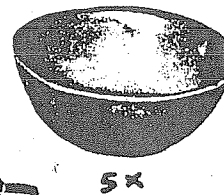
5C



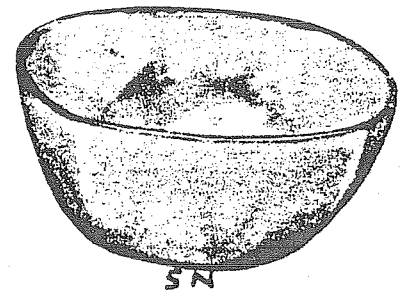
5E



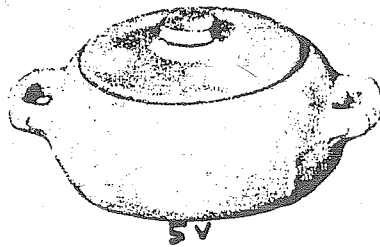
5A



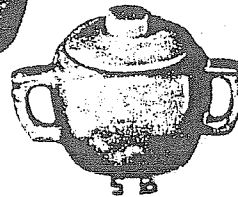
5X



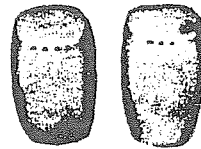
5N



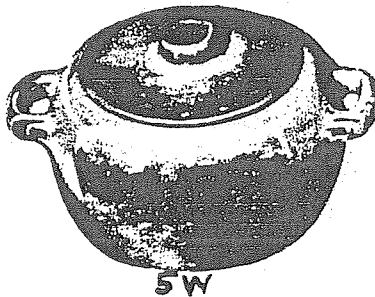
5V



5B



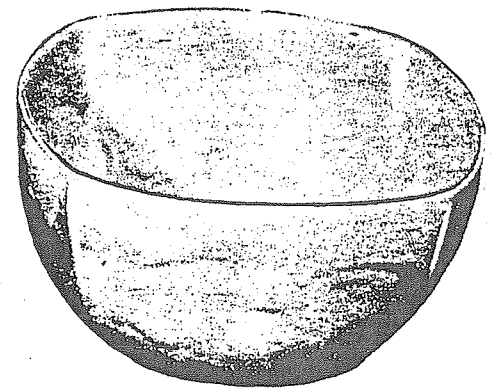
5H



5W



5NS



5NL

5a—16 oz. pitcher	1.00
5b—16 oz. sugar bowl	1.00
5c—7 oz. cup60
5cl—12 oz. mug70
5d—3 qt. pitcher, with ice guard	3.00
5e—plain 6" saucer60
5el—welled 6" saucer60
5f—10 1/2" plate	1.00
5g—8" plate80
5h—large salt and pepper, pair	1.00

5m—16 oz mug80
5n—5 qt. salad bowl	4.00
5ns—2 qt. service bowl	2.00
5nl—9 qt. salad bowl	7.00
5p—16" platter	5.00
5q—13" platter	2.00
5s—28 oz. sauce boat	1.50
5u—16 oz. individual baker	1.00
5v—2 qt. baker	2.00
5w—3 qt. baker	3.50
5x—24 oz. salad, or chili	1.00

“Oklahoma”

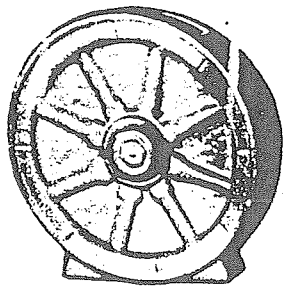
– It's smart

– It's beautiful

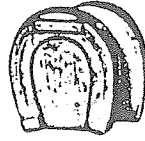
*Its color tones harmonize with your food
as you serve in the Modern Manor – for
those who like nice things,*

– It's durable

– It's ovenproof!



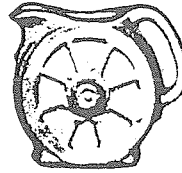
94



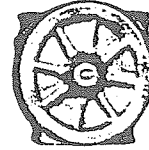
94HL



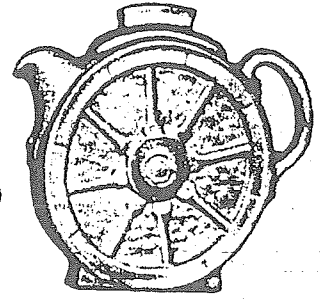
94H



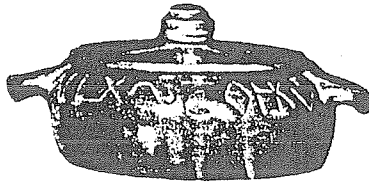
94A



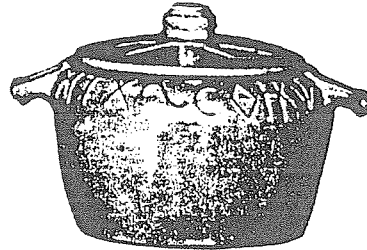
94B



94T



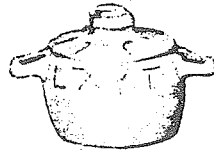
94V



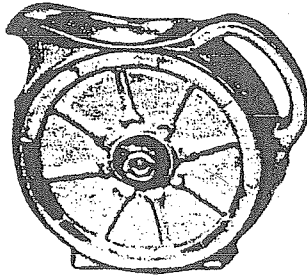
94W



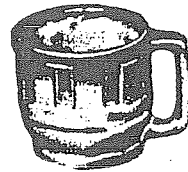
94P



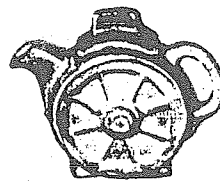
94U



94D



94M

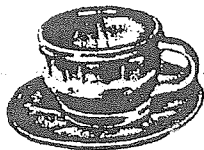


94J

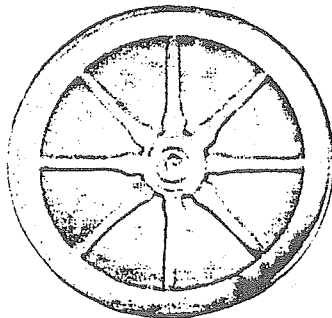


94Q

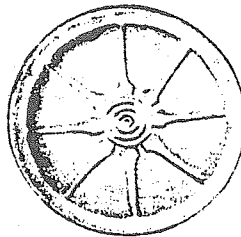
94C



94E



94F



94G



94X



94N

94—9" vase	1.50
94a—10 oz. cream pitcher50
94b—10 oz. sugar bowl50
94c—5 oz. cup40
94d—2 qt. pitcher	1.80
94e—5" saucer40
94f—9" plate80
94g—7" plate60
94h—salt and pepper, pair60
94hl—horse shoe sgp, pair	1.00

94j—2 cup tea pot80
94m—12 oz. mug80
94n—1 qt. service dish	1.00
94p—16" platter	5.00
94q—13" platter	2.00
94r—6 cup tea pot	1.80
94u—12 oz. individual baker	1.00
94v—1 1/2 qt. baker	1.80
94w—2 1/2 qt. baker	2.50
94x—16 oz. chili or soup60

MM W 6666 R E 4 ☆ 101 Q

B
X
R
R
T
O
R
R
H
C
7
7R
C

D
A
K
K
K
S
H
H
C
C
C
D
R
R
Y

WAGON WHEELS

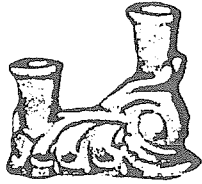
The romance of the west lives on with our Wagon Wheel Set. The pitchers are quaint and practical. The cup is the hub of the wheel, and the "good luck" horseshoe makes the handles for the baker. There are bands of cattle brands on the platters and bowls. The whole set is an application of the fine designs one can find on any ranch.

A most colorful part of the history of the southwest is the cattle industry, and the rancher's "coat of arms" is his "cattle-brand." The covered wagon, "wagon wheels," horses, the cowboys, cattle, the "little dogie," and above all, the "cattle-brand" are symbols of this natural industry. The cattle-brand is the symbol of the rancher, and it identifies his proudest possessions. It is the family trademark, handed down from generation to generation.

Many of these brands are fine designs, and most of them have a definite meaning. Some are the initials of the owner, others may refer to hills on the ranch, the number of acres he owns, the number in the family, his monogram, a key, a hat, or any one of a thousand items of interest. Each brand is usually registered in the county in which it is used.

We are proud to take this opportunity to eulogize these pioneers of the southwest, and include a number of these brands in decorating some of the pieces of our Wagon Wheel Set.

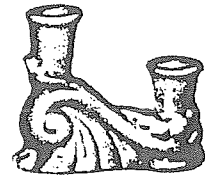
WIT JACK W A Y C 3B DD



304



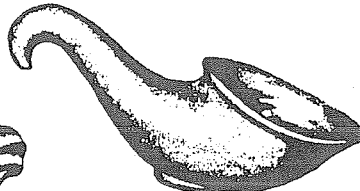
219



304



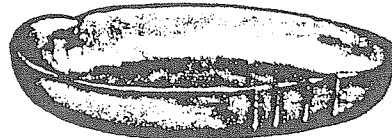
222



57



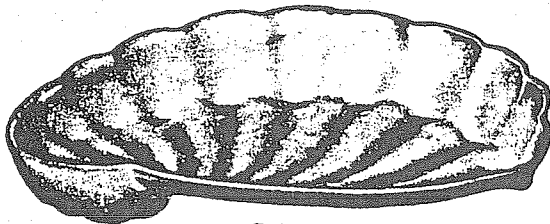
225



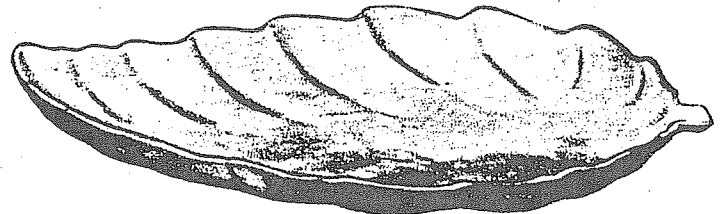
205



226



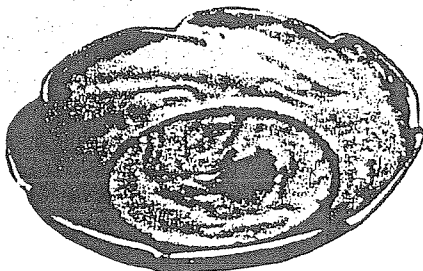
213



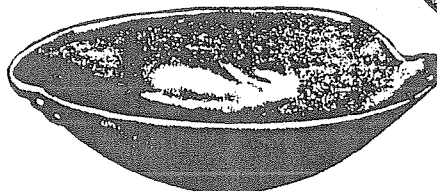
227



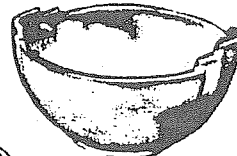
201



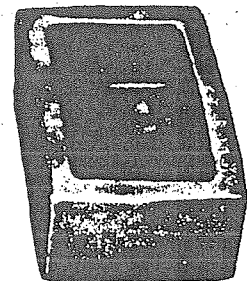
218



202



35

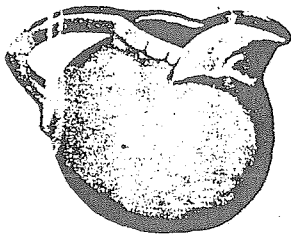


62

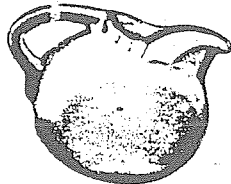
35—shaped bowl, 6"80	218—12" scalloped bowl	2.00
57—small cornucopia, 10"	1.00	219—18" centerpiece bowl	5.00
62—low rectangular bowl	1.20	222—12" cornucopia bowl	2.00
201—bowl, 9"	1.00	225—7" small leaf bowl60
202—bowl, 10"	1.50	226—12" medium leaf bowl	1.50
205—low bowl, 10"	1.00	227—17" large leaf bowl	5.00
213—large shell bowl, 13"	3.50	304—double candle holder, pair	1.00



24—round vase, 6"	1.00	60b—flying goose vase	1.20
31—snail bud vase	.40	63—rectangular vase, 7"	1.20
38—rams head vase	.80	63z—Mayan vase, 7"	1.50
43—tall bud vase	.80	67—rectangular vase, 7"	1.20
50—tall round vase	1.50	68—cube vase, 5"	1.00
53—chambered nautilus vase	1.50	70—round carved vase, 6"	1.00
54—shell vase	1.00	71—leaf handled vase, 10"	2.50
55—ball vase with black foot	1.00	73—tall carved vase, 12"	3.50
56—cornucopia vase, 6"	1.00	74—modelled vase, 9"	2.50
59—hanging decanter	1.20	76—tall vase, 12"	2.00



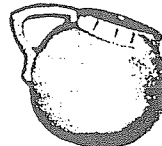
87



87D



87A



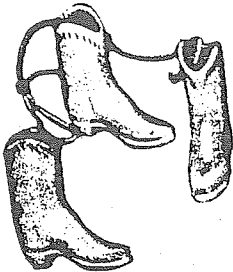
87B



90c



93



507

507s



551



555



558



556



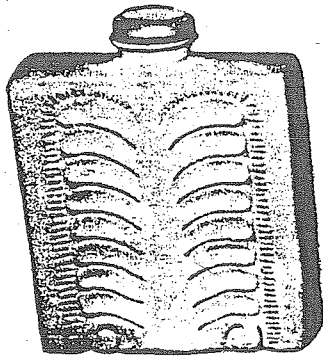
553



47H



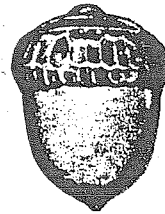
558H



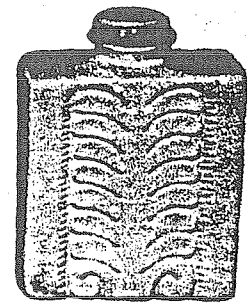
83



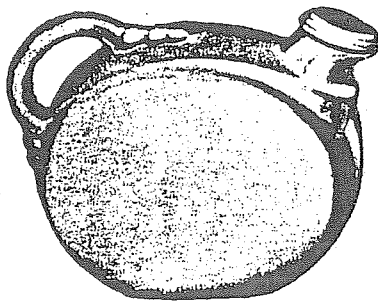
730



190



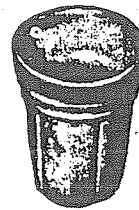
84



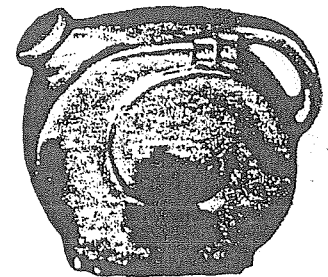
86



80

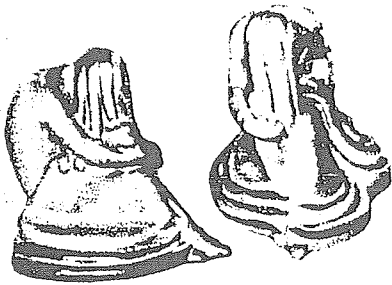


80c

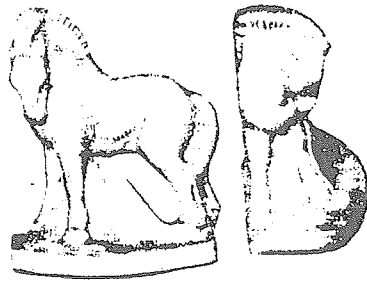


88

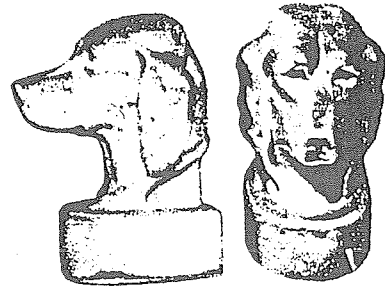
87—1 qt. pitcher	1.00	47h—teepee salt and pepper, pair60
87a—cream pitcher50	558h—shell salt and pepper, pair60
87b—sugar bowl50	80—2 qt. water pitcher	1.80
87d—20 oz. pitcher80	80c—10 oz. tumbler35
93—24 oz. pitcher with lid	1.20	83—60 oz. water bottle	1.80
93—set, with 6 No. 90c cups	2.00	84—40 oz. water bottle	1.20
507—Western cowboy boot30	86—2 qt. water jug	2.00
507s—2 boots on a thong80	88—1½ qt. water jug	1.50
551 thru 558—small pitchers30	190—acorn wall vase60
		730—Phoebe head wall vase	1.50



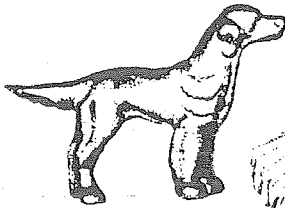
427



420



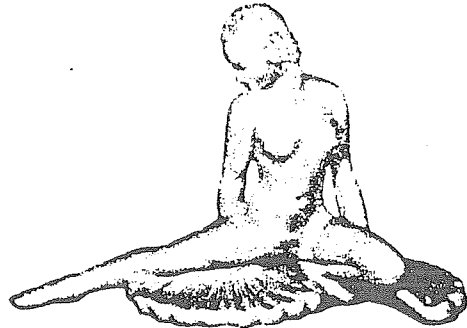
430



141



142



113



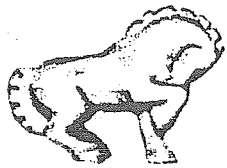
700



702



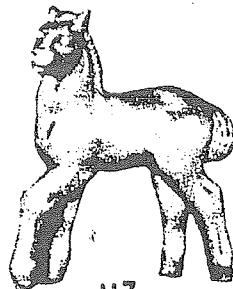
701



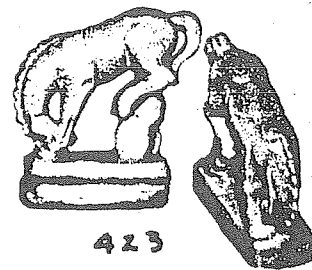
138



116



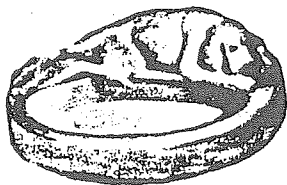
117



423



100



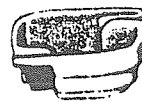
460



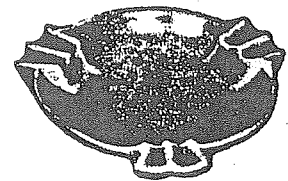
123



168



456



458

- 100—Peter Pan plaque
- 113—fan dancer
- 116—reclining puma
- 117—prancing colt
- 123—Indian bowl maker
- 138—prancing horse
- 141—English setter
- 142—Commanche Indian
- 168—small swan
- 420—Charger horse bookend, pair

- 1.00
- 5.00
- 3.50
- 2.00
- 2.50
- 1.00
- 1.00
- 1.00
- .30
- 3.50

- 423—Western bronco bookend, pair
- 427—Dreamer girl bookend, pair
- 430—Irish setter bookend, pair
- (all bookends weighted and felted)
- 456—ash tray
- 458—large round ash tray
- 460—cocker spaniel ash tray
- 700—flower girl vase
- 701—flower girl vase
- 702—gardner boy

- 2.50
- 3.50
- 5.00
- .30
- 1.00
- 1.00
- 1.20
- 1.20
- 1.20

All prices are net, cash with order, or 25% of amount
with order and balance C.O.D.

"Oklahoma" Pattern Made in Desert Gold
and Bronze Green.

All other pieces made in colors of
Desert Gold
Bronze Green
Peacock Blue

FRANKOMA POTTERY
Sapulpa, Oklahoma

CLAUDE M. SPERLING, Representative
225 Fifth Ave.
NEW YORK 10, N. Y.