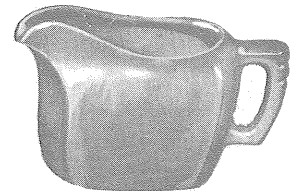


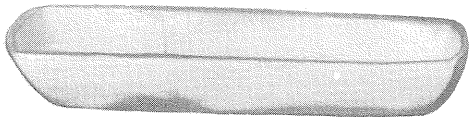
5 p



5 u



5 s



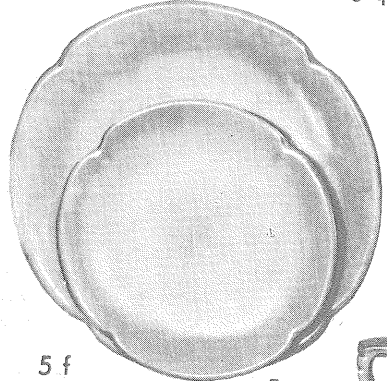
5 q



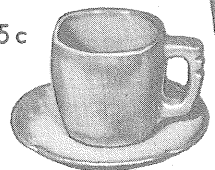
5 cl



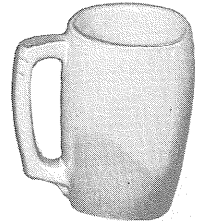
5 d



5 f



5 e



5 m



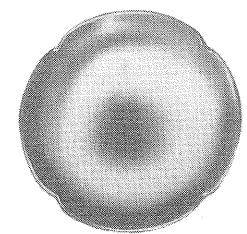
5 a



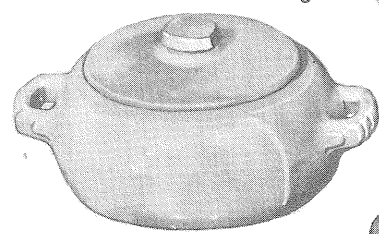
5 hs



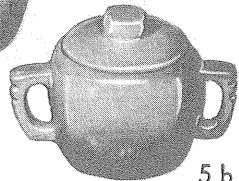
5 L



5 gs



5 v



5 b



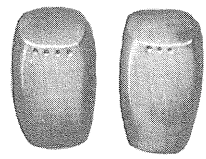
5 xs



5 x



5 xl



5 h



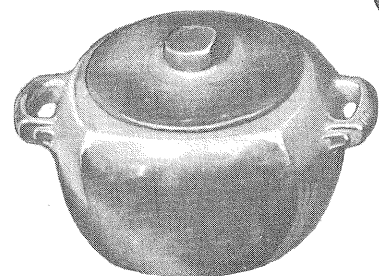
5 de



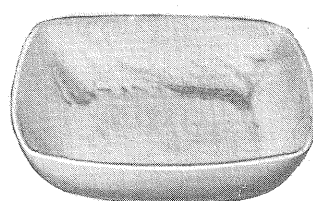
5 db



5 da



5 w



5 ns



5 tl



5 t

5a—12 oz. creamer	1.00
5b—12 oz. sugar	1.00
5c—7 oz. cup60
5e—plain 6" saucer60
5cl—12 oz. mug80
5d—3 qt. pitcher, with ice guard	3.00
5f—10½" plate	1.50
5g—8" plate80
5gs—7" plate70
5h—large salt and pepper, pair	1.00
5hs—small salt and pepper, pair80
5L—12 oz. tumbler60
5m—16 oz. mug	1.00
5ns—9" service bowl	2.00

5p—16" platter	5.00
5q—13" platter	2.00
5s—28 oz. sauce or gravy boat	1.50
5t—6 cup tea pot	2.00
5tl—12 cup pot	3.50
5u—16 oz. individual baker	1.00
5v—2 qt. baker	2.50
5w—3 qt. baker	3.50
5x—16 oz. chili, soup, or cereal60
5xs—10 oz. dessert60
5xl—24 oz. salad or service bowl	1.00
5da—small creamer60
5db—small sugar bowl60
5dc—demitasse cup50
5de—demitasse saucer50

THIS PAGE AVAILABLE IN PRAIRIE GREEN, DESERT GOLD, CLAY BLUE ONLY