

FRANKOMA POTTERY SAPULPA . . . OKLAHOMA TELEPHONE 789

John N. Frank • President

J. W. Daugherty • Vice-Pres.

Grace Lee Frank • Secy-Treas.

January 10, 1955

Dear Customer:

We are proud to present our finest catalog yet. We are presenting the line in attractive groups as suggestions for attractive displays.

Please destroy your old catalogs and read our new terms of sale. This will avoid confusion and misunderstandings. Please note the minimum order request. Since we do not have a packing or a package charge on regular orders, we find this necessary. You can have as many catalogs as you wish - just ask for them. At least everyone in your organization should have a catalog.

We have put the wholesale prices and terms on a separate sheet to allow you to write in your own marked up prices. Those living great distances from the plant can thus make some allowances for freight.

Last year we asked you for suggestions - and we got them. You asked for a Frankoma representative to call on you. So, we are bringing to our organization representatives to serve you as quickly as we can find qualified men for the job.

Consequently, a small raise in prices had to be made on some pieces - about 5% overall. Frankoma is still the best buy in its field, and will remain so.

We are sorry to report that Nick Schuler, our sales manager, has left Frankoma to devote his full time to his other interests, so I am going to assume his responsibilities for the time being.

1954 was good, but we promise you a "Best" 1955.

-with kindest personal regards, I am

Sincerely,

John Frank
President

dinnerware
sculpture
artware

for those who like nice things _____

1-19-53



*This is
Frankoma*

FRANKOMA POTTERY

A fine example of the potter's art, preserved forever in fired clay!

To say, "There is nothing new under the sun", is not quite true. Having been created in His own image, we all have been endowed by our Creator, among other important things, with the ability to *create* - to take the natural raw materials of God's creation and by applying these gifts of creation, present to the world a new thought, if not a new material, which we can say is *ours!* This is the artists' challenge!

True it is, that we are affected and influenced by all that we have seen and been taught from birth. But, we can by choice, reject the bad and irrelevant, choose and combine new associations of lines, masses and colors into inspiring new forms, yes, new *creations* - and present to the world a "thing of beauty" which will enhance our surroundings "forever". Frankoma accepts that kind of a challenge.

We have endeavored to tell our story simply, in the oldest of all art materials - clay. We have used as inspirations the materials at hand here in the Southwest - wagon wheels, cattle brands, the plains, Indian lore, cactus and other natural forms, as well as just pure simple beautiful lines and masses that are relevant only to themselves - "*Free Forms*", if you please. We inherited the traditional art of the Indians, the spirit of the American pioneer, and the creative tendencies of the youth of the great Southwest and molded them into good pottery forms. Each piece is designed by Frankoma, to be a contribution to the art of potting and fine ceramics and to be both useful and beautiful.

Our blended colors are created and ground by us, and they also reveal their natural surroundings and heritage - Prairie Green, Desert Gold, Red Bud, Onyx Black, White Sand and Clay Blue. They are fired high and long to be hard, lustrous and ovenproof - to *serve* you well.

We sincerely hope you will enjoy living with Frankoma Pottery as much as we do creating it. Frankoma is more than a name of a pottery, it is the embodiment of our personal artistic philosophy. It can only serve one purpose - whether it is a plate, pitcher or flower bowl - that by its association your life and surroundings might be a bit happier.

Grace Lee Frank

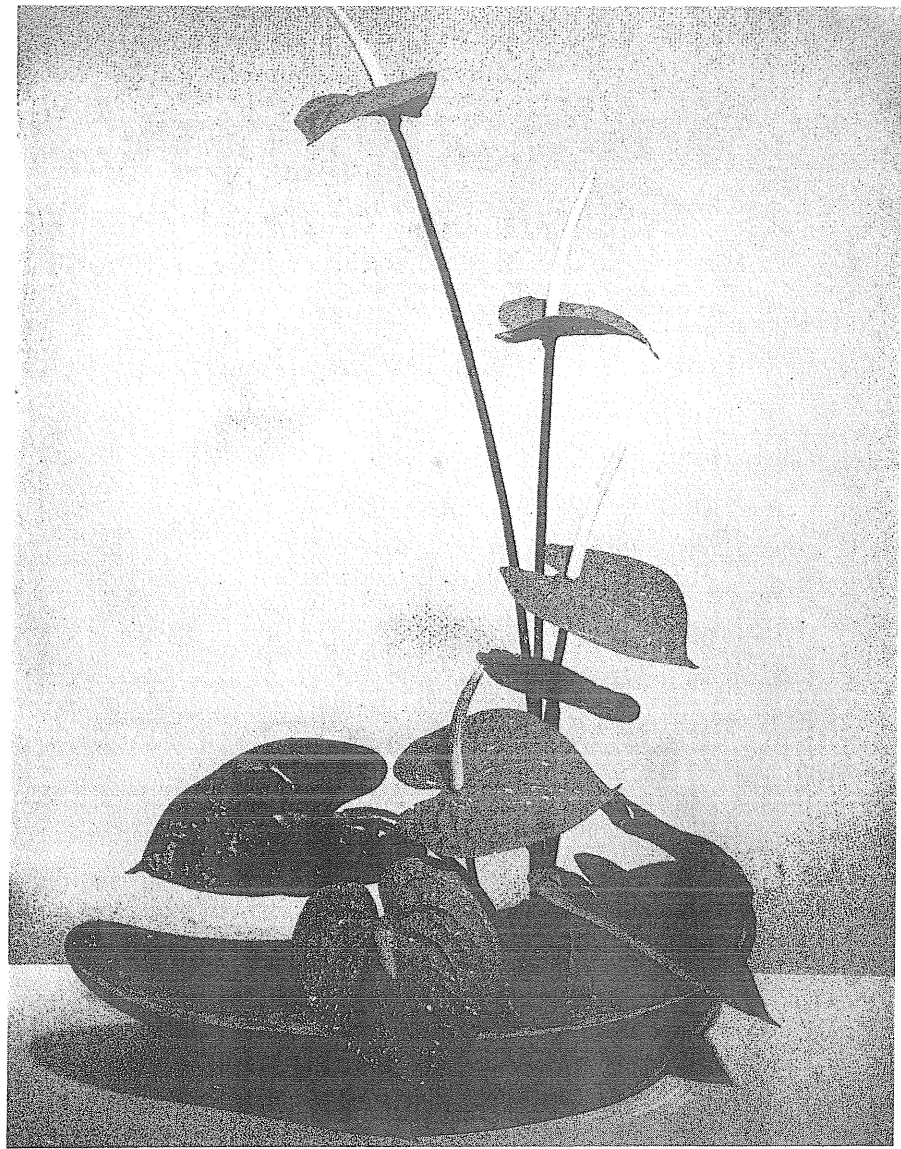
John Frank

FLOWER ARRANGEMENTS AND CONTAINERS

Flower arranging is placing on exhibition the beautiful flowers, foliage, and branch forms that only God can sculpture and paint. When the exhibitor sees the beauty of his composition penetrate through the room it occupies, there is a joy and satisfaction that truly feeds the soul.

Flowers sound the color note in your room, and if you go about arranging them in a happy mood you can make the line of your composition swing to the tempo you desire.

To build a flower arrangement you must first have a foundation and your container should serve you in that capacity. Although it is not the most prominent feature it is of utmost importance. Therefore, you should select containers in quiet, subdued colors. Frankoma's earthen matt glazes are ideal for color and texture.



A container should have simple, sculptured shapes to allow one more freedom in bringing out the desired line accent. The lines of your container should be subtle, yet strong enough to give the arrangement security. Frankoma containers are designed with this in mind. If simplicity is your keynote you will not be disturbed by confusing lines and intricate patterns.

Good taste bids us keep the flowers in an environment suitable to their type for the background is to an arrangement what the frame is to a picture. Choose your flowers carefully as to color, for it creates the first emotional effect. They should also be interesting in form and character. For a bouquet to qualify as an arrangement it should have line, color and pattern. Textures should be combined to harmonize and justify their association together. Check the combination of materials and textures to be sure there is a relative harmonious relationship.

Your foliage should be selected with equal care and placed as purposefully. You will find many surprises and thrills when you look through the large variety of intense colors and gorgeous shapes of plant foliage. It is very important that you cut out all unnecessary leaves or

branches that will make your arrangement look cluttered. It is everyones desire to make their arrangement look fresh and clean-cut.

A well-balanced composition should have a main line that will govern the other two basic lines of the design. Sometimes it is the foliage, sometimes the flowers themselves, and often the branches that produce these lines. If you allow the stems to cross each other they are liable to cause friction and you lose your harmonious and rhythmic feeling.

To make this exhibit we have talked about, you will need some tools — as much so as you need pots and pans to cook a meal. It is well to have a small basket to keep your clippers, flower holders, floral clay, and wire conveniently together, and then there is no time lost in looking for misplaced equipment.

It might be fun to think of your container as a stage. Pick your leading characters and make them your center of interest. The less important flowers and foliage complete your show and together they can tell a beautiful and romantic story.

WAGON WHEELS

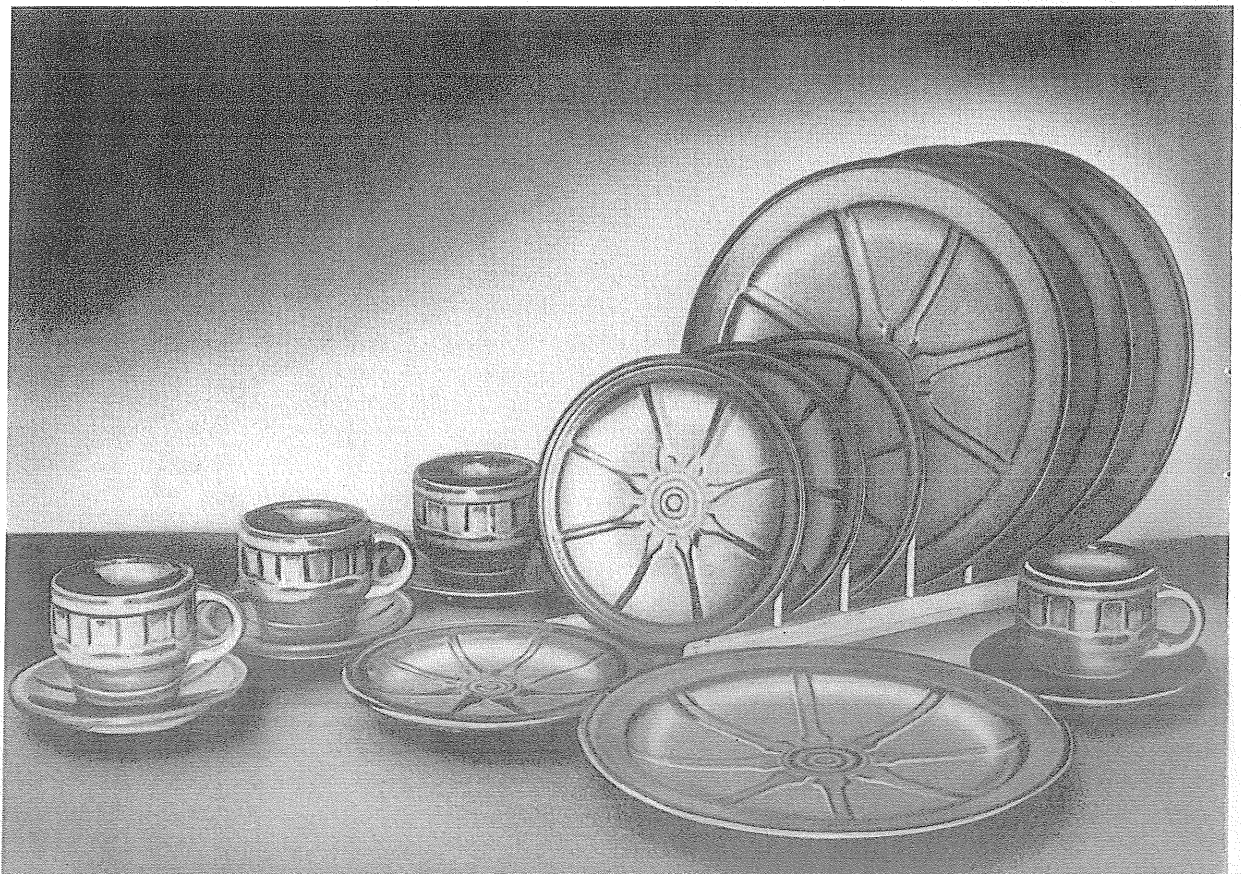
THE ROMANCE OF THE WEST lives on with our WAGON WHEEL Pottery! The pitchers are quaint and practical. The cup is the hub of the wheel, and the "good luck" horseshoe makes the handles for the baker. There are bands of cattle brands on the platters and bowls. The whole set is an application of the fine designs one can find on any ranch.

A most colorful part of the history of the southwest is the cattle industry, and the rancher's "coat of arms" is his "cattlebrand." The covered wagon, "wagon wheels," horses, the cowboys, cattle, the "little dogie," and above all, the "cattle-brand" are symbols of this natural industry. The cattle-brand is the symbol of the rancher, and it identifies his proudest possessions. It is the family trademark, handed down from generation to generation.

Many of these brands are fine designs, and most of them have a definite meaning. Some are the initials of the owner, others may refer to hills on the ranch, the number of acres he owns, the number in the family, his monogram, a key, a hat, or any one of a thousand items of interest. Each brand is usually registered in the county in which it is used.

We are proud to take this opportunity to eulogize these pioneers of the southwest, and include a number of these brands in decorating some of the pieces of our WAGON WHEEL Set. Every piece is oven-proof.

Available in Prairie Green, and Desert Gold.



16 piece starter set
individually boxed



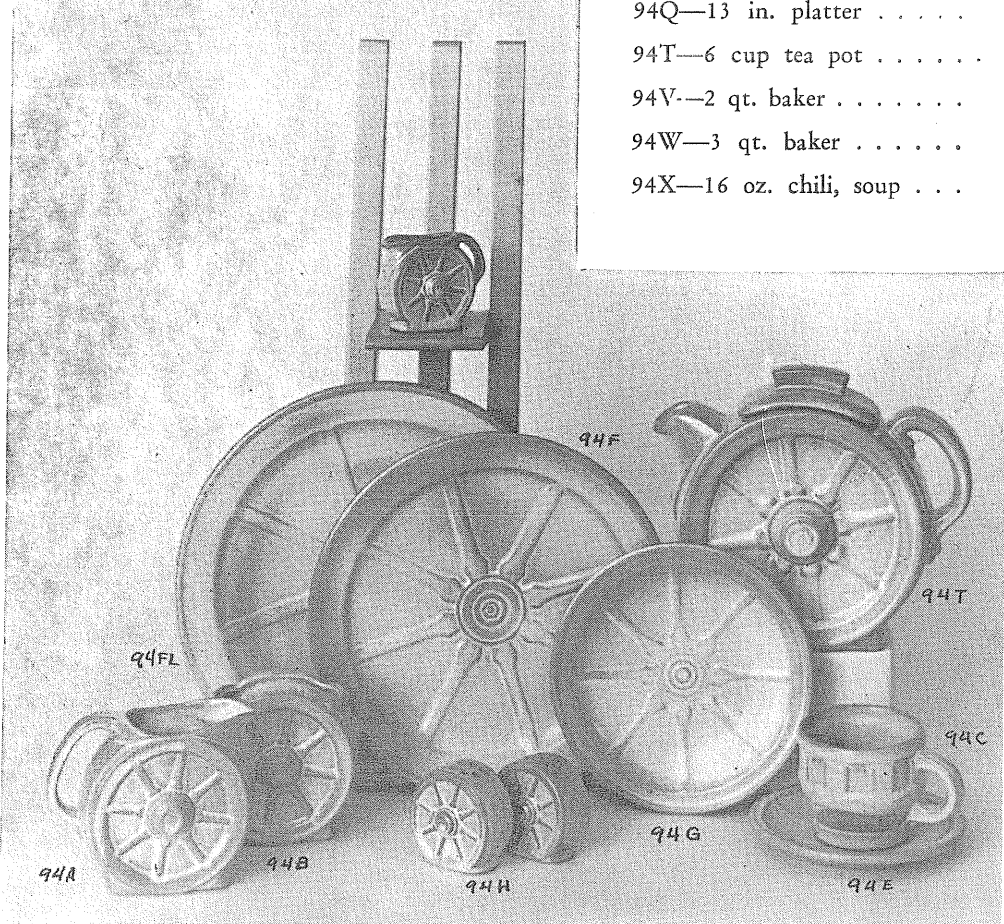
- 94A—8 oz. creamer
- 94B—8 oz. sugar
- 94C—5 oz. cup
- 94D—2 qt. pitcher
- 94E—5 in. saucer
- 94F—9 in. plate
- 94FL—10½ in. plate
- 94G—7 in. plate
- 94H—salt and pepper
- 94J—2 cup tea pot
- 94M—16 oz. mug
- 94N—1 qt. service dish
- 94P—16 in. platter
- 94Q—13 in. platter
- 94T—6 cup tea pot
- 94V—2 qt. baker
- 94W—3 qt. baker
- 94X—16 oz. chili, soup

CAPTURING

the hospitality of our early pioneers, for those who have learned the pleasures of casual living.

WAGON WHEELS

Oven-proof Dinnerware



- 94XL—24 oz. bowl
- 94XO—5 oz. dessert bowl
- 4K—covered butter dish
- 80C—12 oz. tumbler
- 510—individual sugar
- 560—individual creamer



Oklahoma Plainsman

For thousands of years men have gloried in creating "atmosphere" around their favorite sport — eating. Harmonious and beautiful surroundings not only add to the pleasure of eating but make it a healthier pastime. We still lavish all we possibly can on our banquets and feasts, for we love to eat.

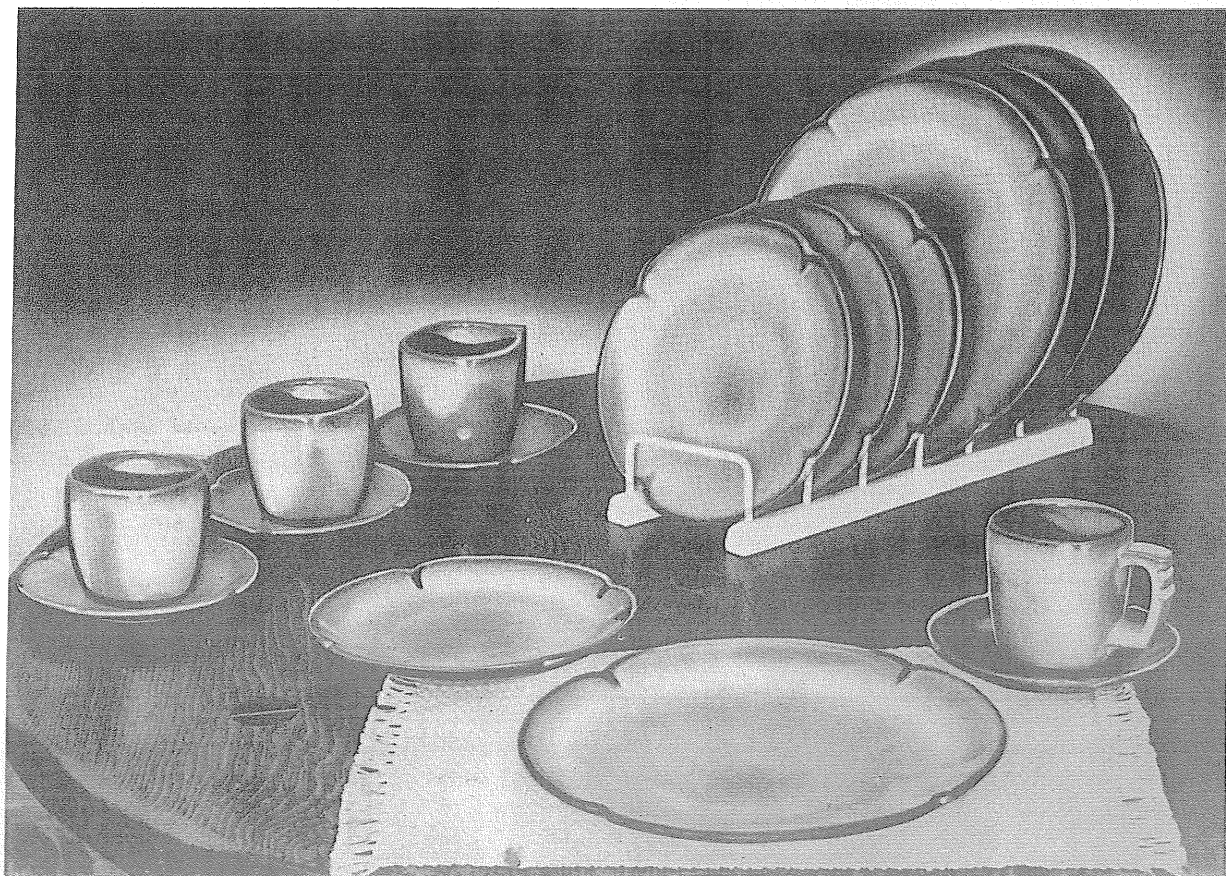
Men have always managed to devise some sort of receptacle to hold food, either raw or prepared, and the quality and value of his utensils depend more on his love of beauty and ability to create than the size of his purse. Of the many materials used throughout the centuries, in all countries of the world — iron, copper, brass, stone, wood, silver, and even gold, ceramics has remained the favorite of all eating vessels.

Since the acceptance of "whiteware" in the sixteenth century, most fine tables have been set with "dinnerware" or "china." This is sometimes a white earthenware, or a compounded china body, or even a translucent true porcelain. Its quality depends on the selection and handling of the materials plus its Art value expressed in line, form and color.

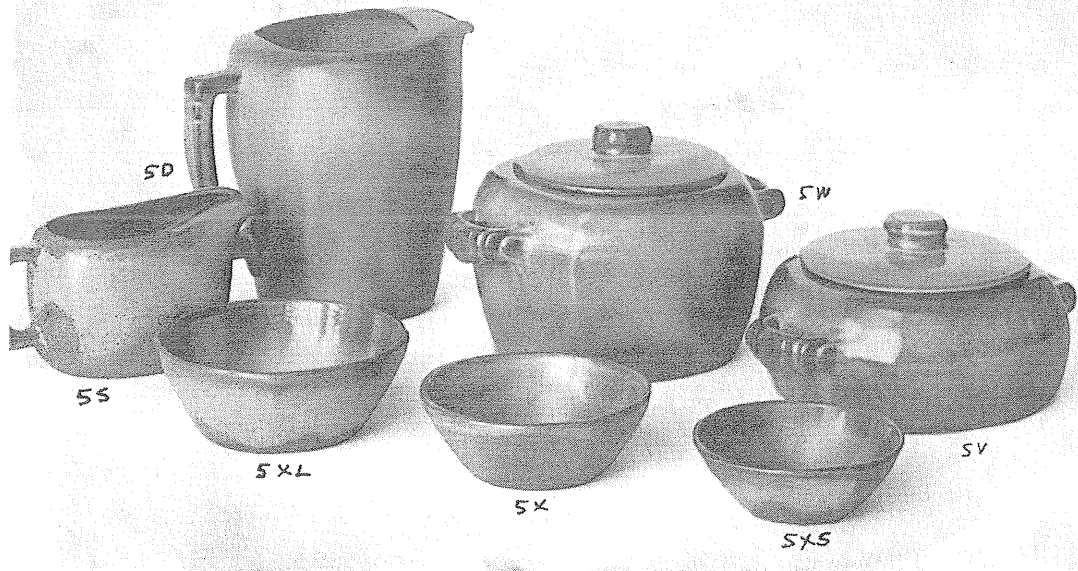
Today, from the crudest earthenware to the finest porcelain, we still choose CERAMICS of some kind for our table. Although we would not eliminate "white-ware," we love our modern pottery tableware. Why not? It is gay, happy, and colorful, and surely into our modern mode of living. It is with this in mind that we have created FRANKOMA TABLEWARE.

For one design we have gone to the Great Plains of the Southwest and offer you the "OKLAHOMA PLAINSMAN" pattern. Its well chosen, simple lines and sturdy shapes create an atmosphere befitting its heritage. It is most appropriate "for fun or fashion." Every piece is oven-proof.

Available in Prairie Green, and Desert Gold.



16 piece starter set
individually boxed



- 5A—12 oz. creamer
- 5B—12 oz. sugar
- 5C—7 oz. cup
- 5CL—12 oz. mug
- 5D—3 qt. ice guard pitcher
- 5E—6 in. saucer
- 5F—10½ in. plate
- 5G—8 in. plate
- 5GS—7 in. plate
- 5HS—salt and pepper, pair
- 5L—12 oz. tumbler

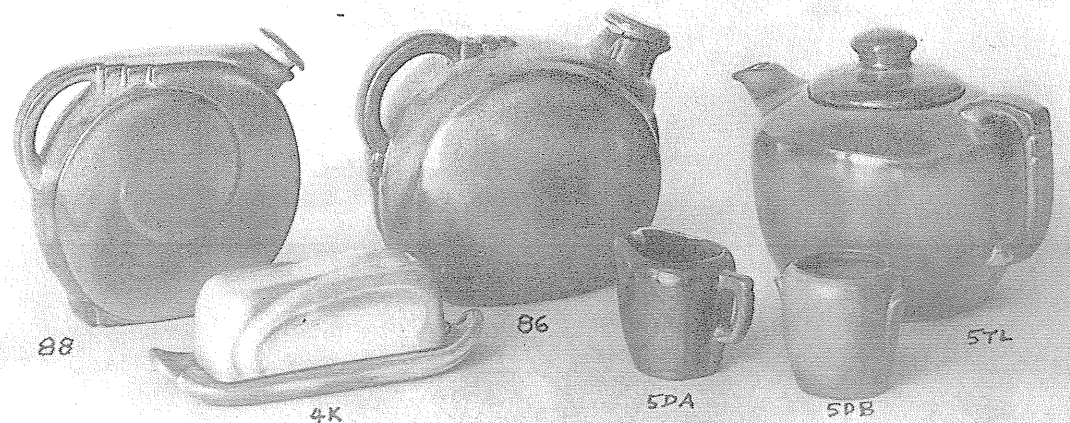
The Plainsman



- 5M—16 oz. mug
- 5ND—cheese dip dish
- 5NS—8 in. service bowl
- 5P—16 in. platter
- 5Q—13 in. platter
- 5S—28 oz. gravy boat
- 5T—6 cup tea pot
- 5TL—12 cup pot
- 5V—2 qt. baker
- 5W—3 qt. baker



- 5X—16 oz. soup, or cereal
- 5XL—24 oz. salad or service
- 5XS—10 oz. dessert bowl
- 5DA—small creamer
- 5DB—small sugar
- 4K—butter dish
- 86—2 qt. water jug
- 88—1½ qt. water jug



LAZYBONES

Sculptured Free Form Tableware

Our American homes are being designed and built so that home makers can take advantage of the many modern conveniences, yet develop their own personalities in color and styling.

The furnishings for these contemporary homes are practical and simplified. They must be selected carefully to preserve a cordial atmosphere, which we all wish for our family and friends.

Frankoma was sensitive to these trends when this new dinnerware was being designed. The atmosphere surrounding Lazybones is relaxing, for you are influenced by its free flowing sculptured lines. As you accept the invitation to handle and caress each piece, you will love the way they fit the contour of your hands, for immediately they become a part of you.

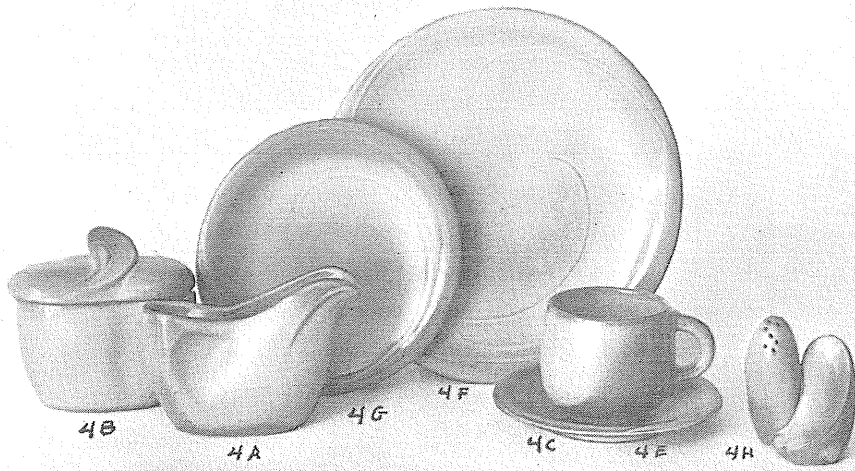
Food cooked in Lazybones can go from the oven to the table — and there are so many uses for each piece. They are designed to serve!

Notice the array of Frankoma's colors. They are the gourmet's delight, for they all compliment your food and share in making every meal an occasion. The shapes themselves are both practical and beautiful.

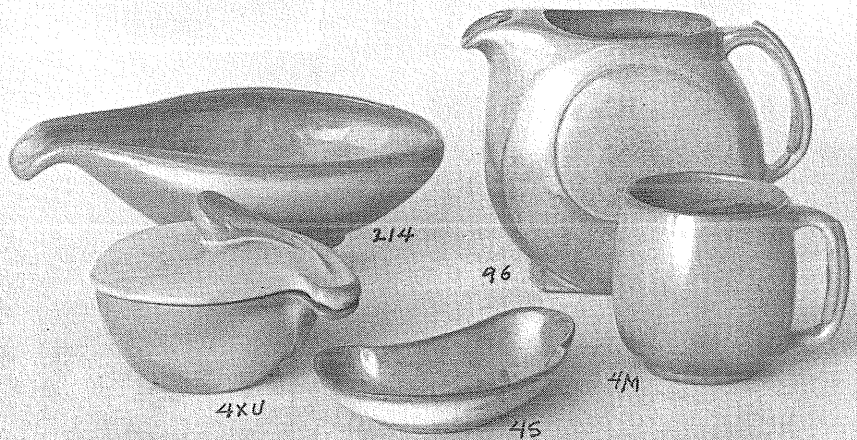
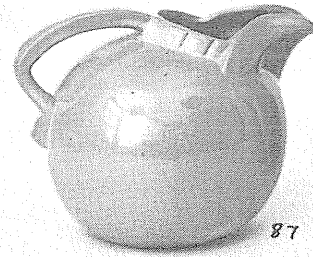
When you set your table with Lazybones, you are set to relax, and enjoy your share of casual living. It will be the "Talk of the Table" with your family and friends. Available in Prairie Green, Desert Gold, Clay Blue.

16 piece starter set individually boxed.





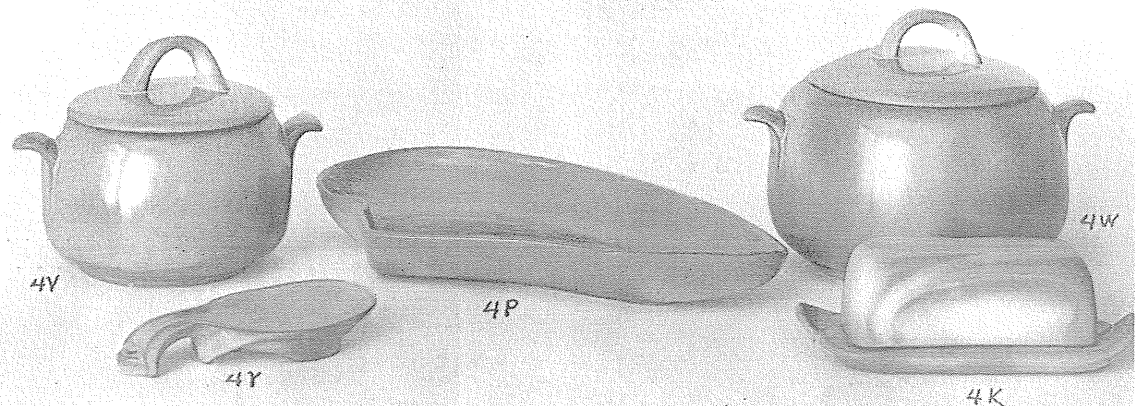
- 4A —8 oz. creamer
- 4B —8 oz. sugar
- 4C —5 oz. cup
- 4D —2 qt. pitcher
- 4E —5 in. saucer
- 4F —10 in. plate
- 4G —7 in. plate
- 4H —salt and pepper



- 4K —covered butter dish
- 4M —16 oz. mug
- 4N —service bowl
- 4P —13 in. platter
- 4S —bone dish
- 4V —1½ qt. baker
- 4W —3 qt. baker
- 4X —16 oz. bowl
- 4XU —covered bowl

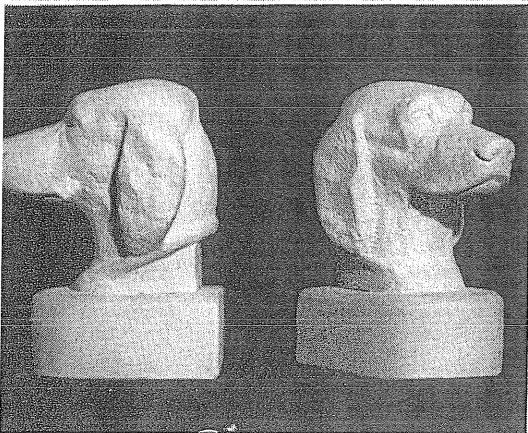


- 4Y —spoon holder
- 4Z —6¼ in. salad bowl
- 5L —tumbler
- 80 —2 qt. pitcher
- 87 —1 qt. pitcher
- 205 —10 in. service bowl
- 214 —12 in. service bowl
- 231 —11 in. service bowl



CLASSIC

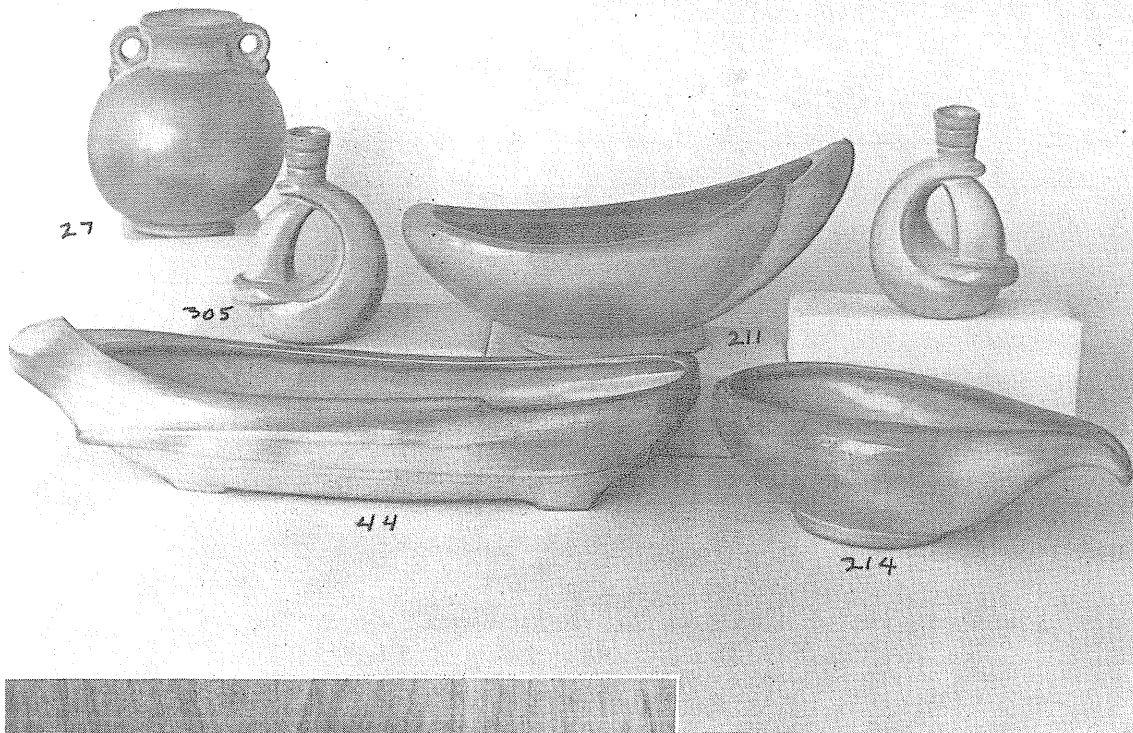
*—refined, sculptured
traditional, forms.
—outstanding treasures
of fine ceramics.*



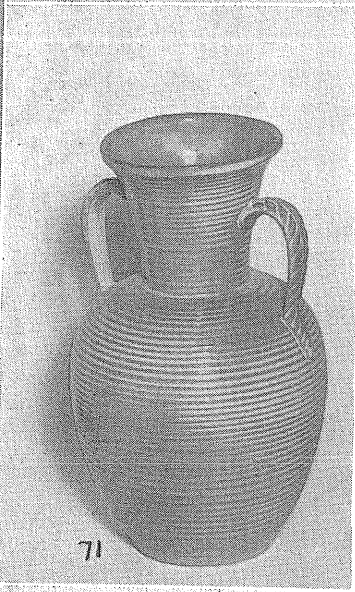
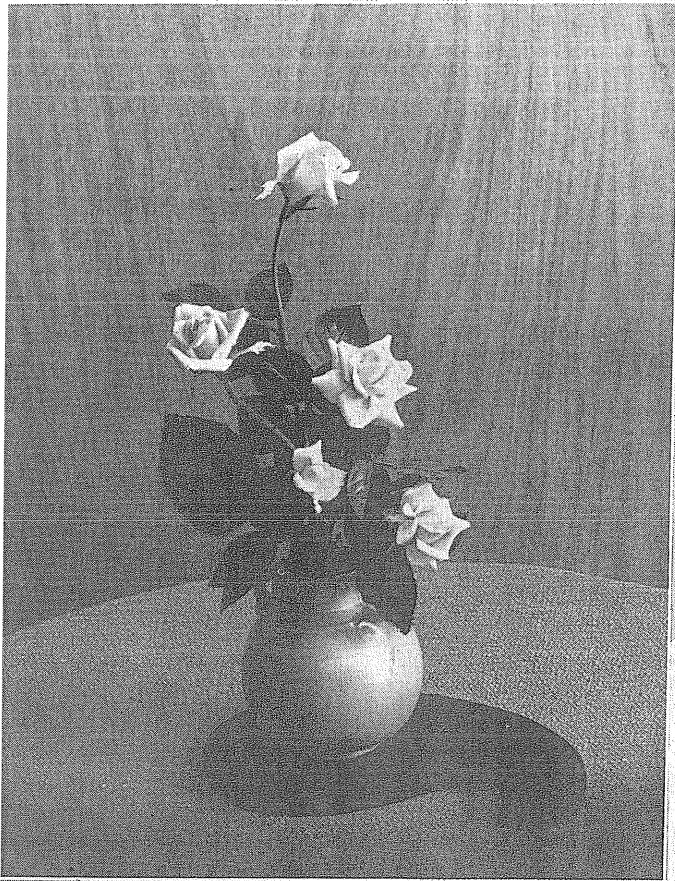
- 113—fan dancer, 13 in.
- 304—candle holders, pair
- 430—Irish Setter book ends, pair
- 114—seated puma, 7 in.
- 116—reclining puma, 9 in.



- 77—tall fireside vase, 17 in.
- 77A—tall fireside pitcher, 17 in.

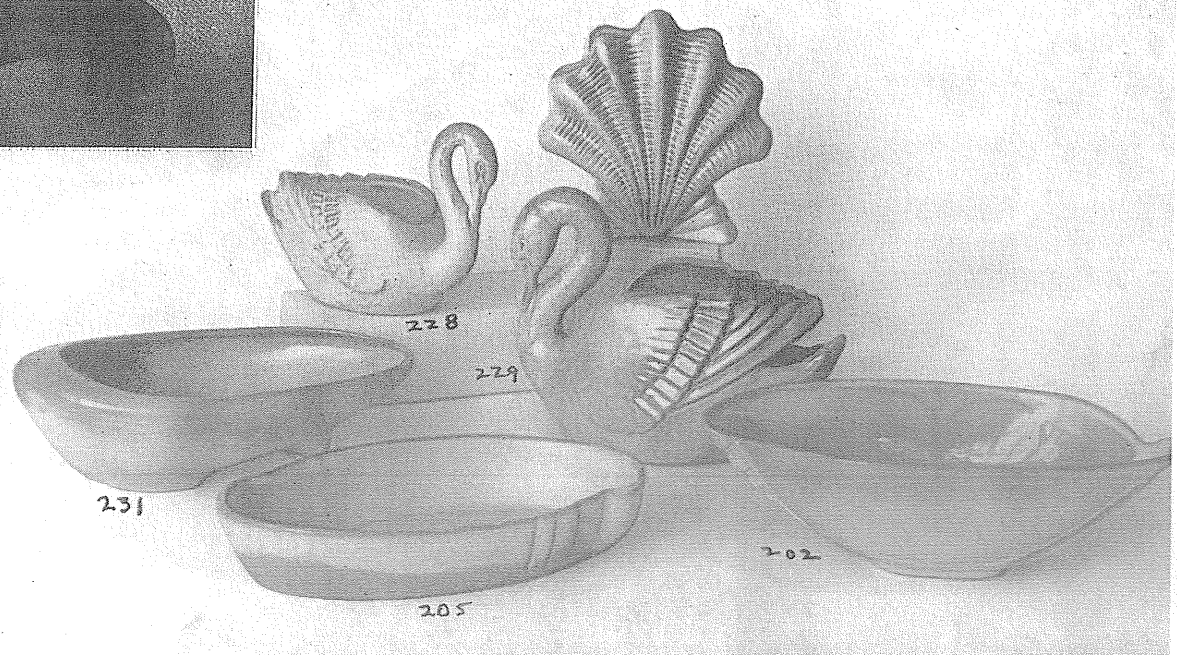


- 27 —round handled vase, 7 in.
- 44 —long, deep centerpiece bowl, 18 in.
- 54 —shell vase, 6 in.
- 71—leaf handled vase, 10 in.
- 202—deep, shaped bowl, 11½ in.
- 205—low oblong bowl, 10 in.
- 211—crescent bowl, 12½ in.
- 214—free form bowl, 12 in.
- 228—swan vase, 7½ in.
- 229—swan vase, 9 in.
- 231—abalone shell bowl, 11 in.
- 305—single candle holder, pair
- 804—cross, mounted on flower holder base, 6½ in.



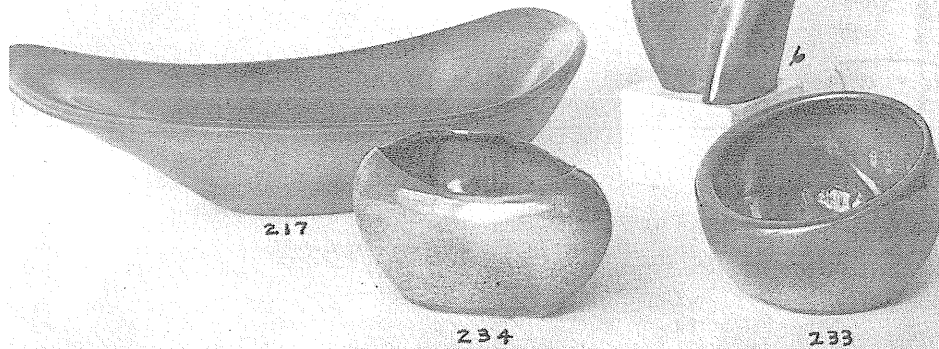
Frankoma Containers

are the foundation of beautiful arrangements.



Sculptured Free Forms

*modelled in
the casual
modern trend.*



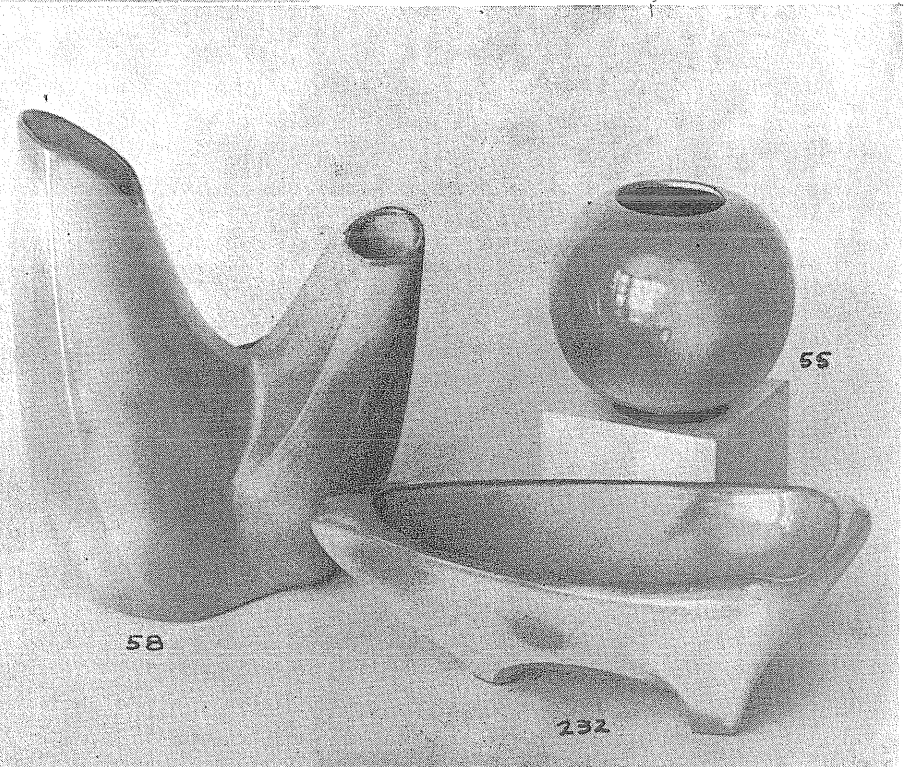
217

234

233



452



58

55

232



42

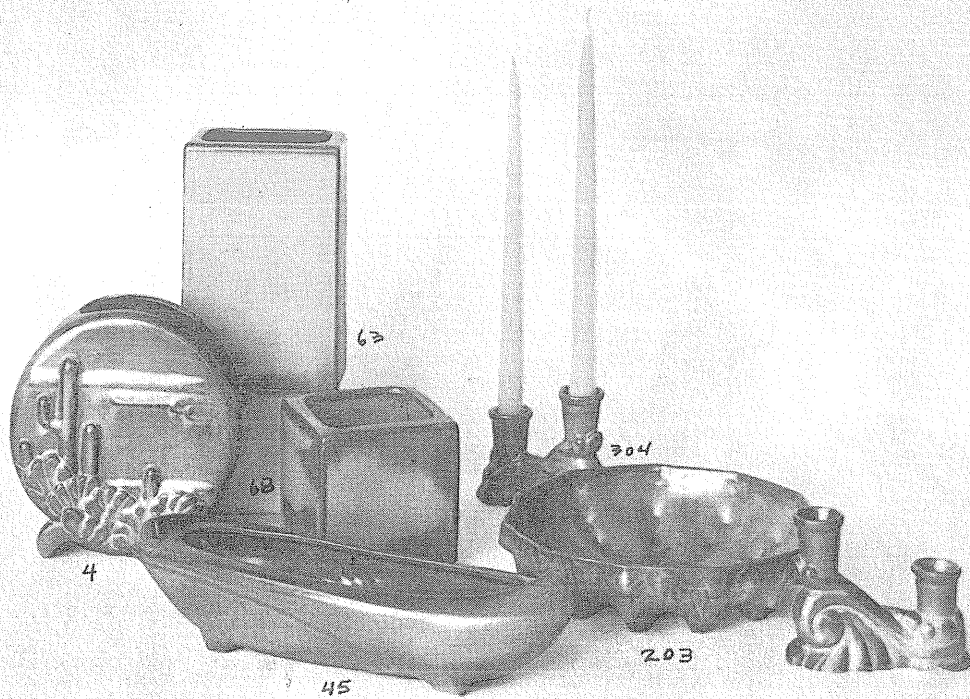
420

52

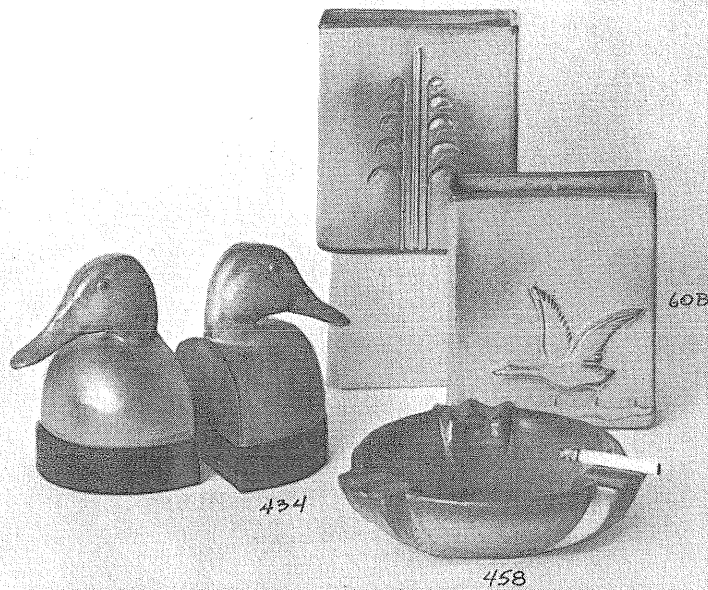
455

- 6 —deep free form vase, 7 in.
- 43 —large bud vase, 8 in.
- 52 —pedestalled urn vase, 8 in.
- 55 —ball vase with black foot, 5 in.
- 58 —free form, 3 level vase, 9½ in.
- 217—large free form centerpiece, 18 in.
- 232—triangle free form bowl, 11 in.
- 233—round bowl
- 234—deep free form bowl, 8 in.
- 420—charger horse book ends, pair
- 452—free form ash tray
- 455—draft proof ash tray

Beautiful Practical Serviceable

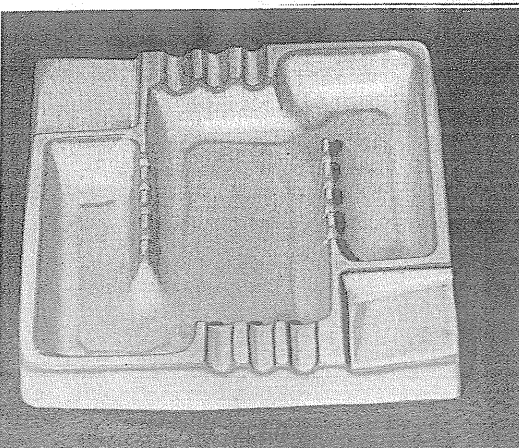


- 4 —desert cactus vase, 7 in.
- 45 —slender bowl, 12 in.
- 63 —pillow vase, 7 in.
- 68 —cube vase, 5 in.
- 203—knobby cactus bowl,
10 in.
- 304—double candle holders,
pair



434—mallard
duck book ends
on black walnut
bases, felted,
pair

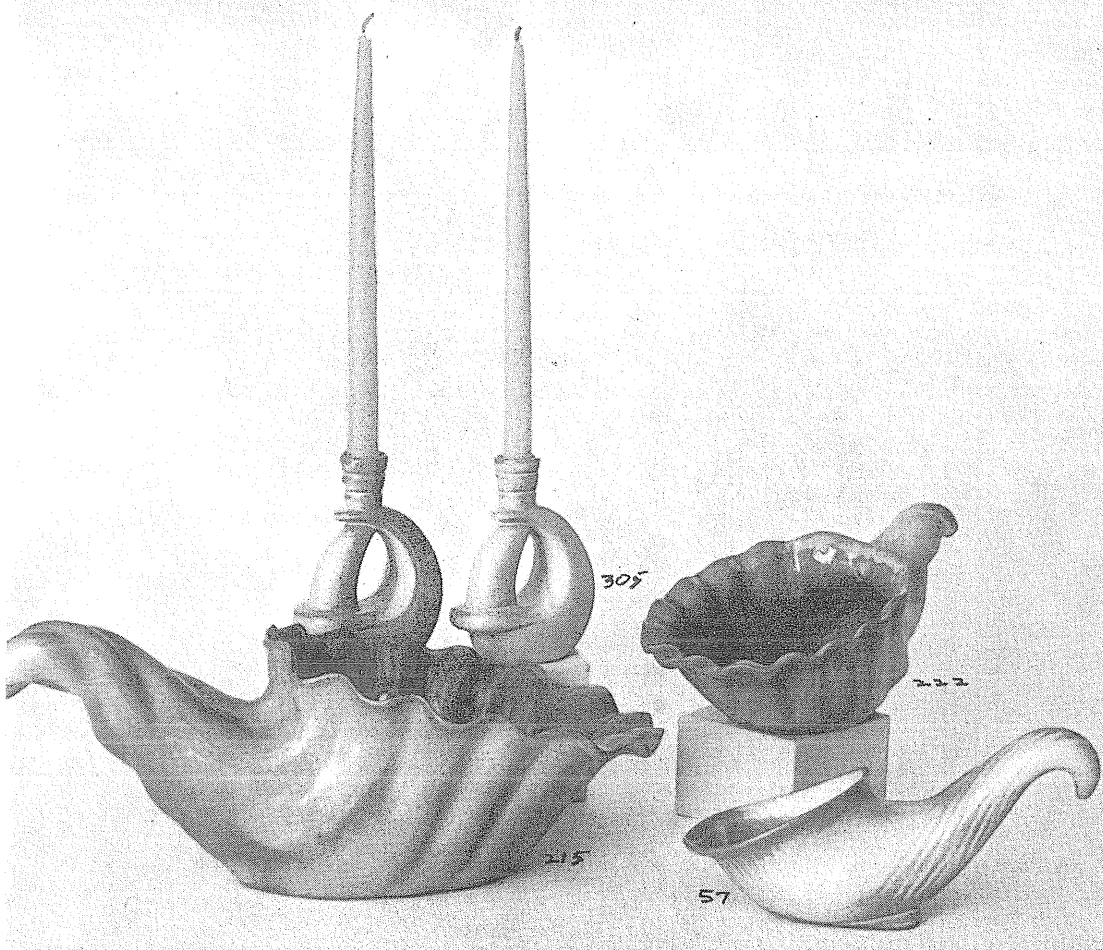
- 60B—goose vase, 6 in.
- 458—8 in. ash tray,
felted
- 97D—2 qt. barrel pitcher . . .
- 97M—16 oz. mug
- 97U —10 oz. covered
ramkin
- 97V—2 qt. barrel baker



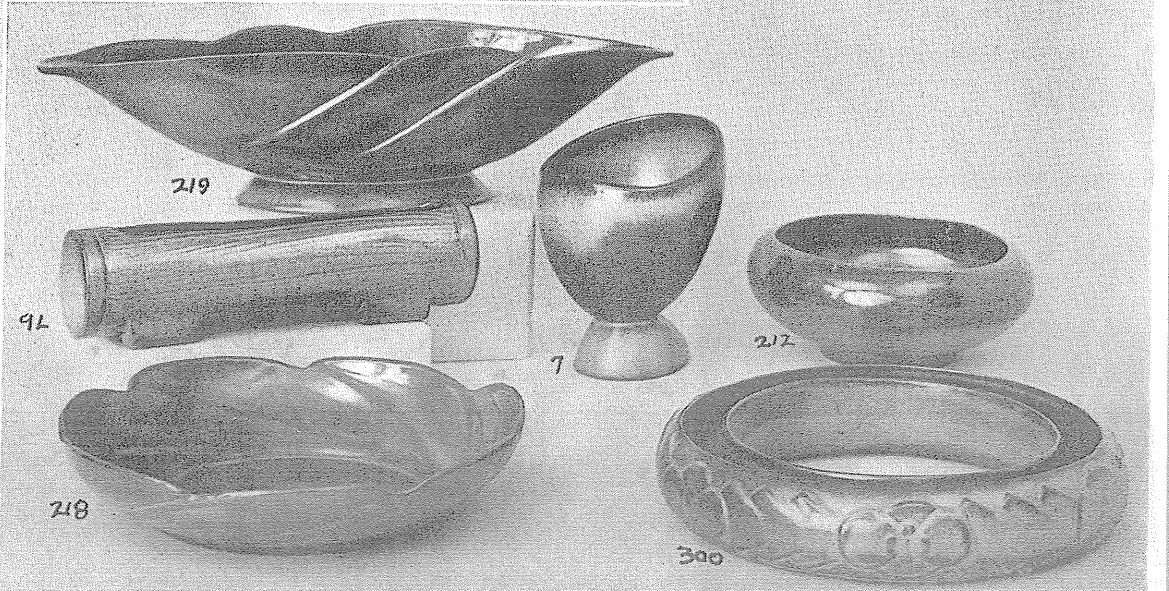
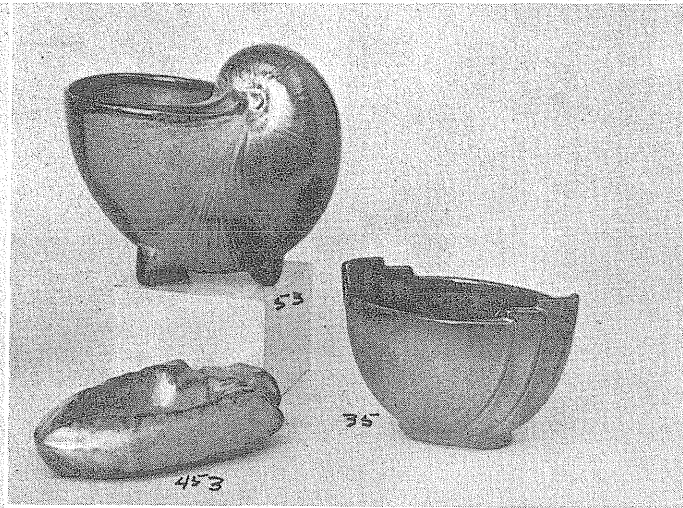
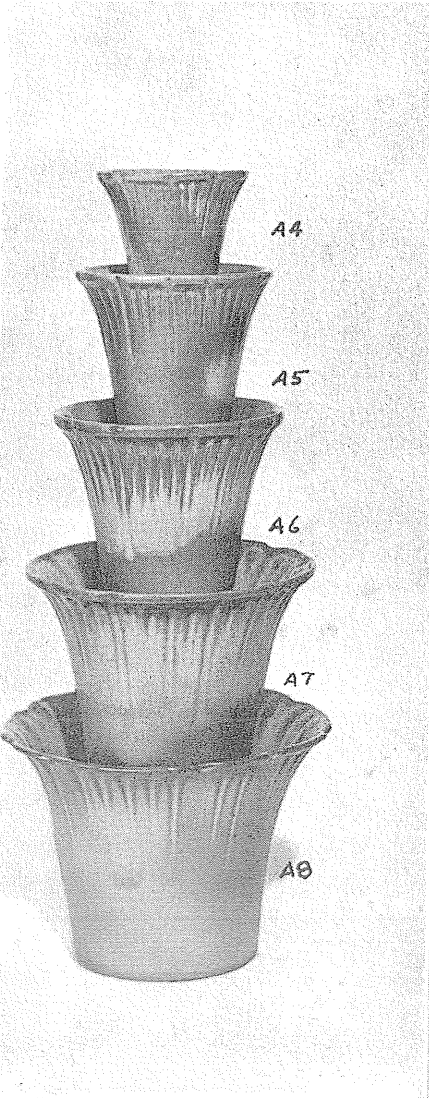
464—10½ in. large square ash
tray, felted



97D 97U 97V 97M



- A4—4 in. flower pot
- A5—5 in. flower pot
- A6—6 in. flower pot
- A7—7 in. flower pot
- A8—8 in. flower pot
- 7 —free form vase, 7 in. . .
- 9L —low textured bowl,
11 in.
- 35 —carved, shaped bowl,
6 in.
- 53 —chambered nautilus
vase, 6 in.
- 57 —small cornucopia,
10 in.
- 200—wedding ring bowl,
12 in.
- 212—deep round bowl,
7½ in.
- 215—large cornucopia,
15 in.
- 218—round swirl bowl,
12 in.
- 219—large centerpiece
bowl, 18 in.
- 222—medium cornucopia,
12 in.
- 305—single candle holders,
pair
- 453—arrowhead ash tray

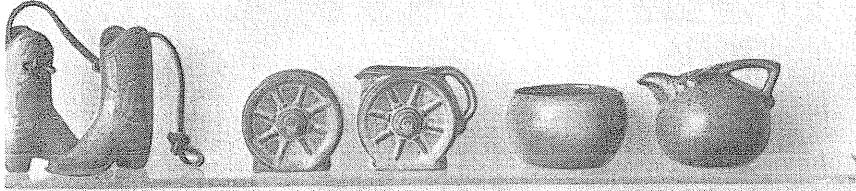




162 161 165 169 168 507



511 562 550 551 500 135



507S 510 560 504 553



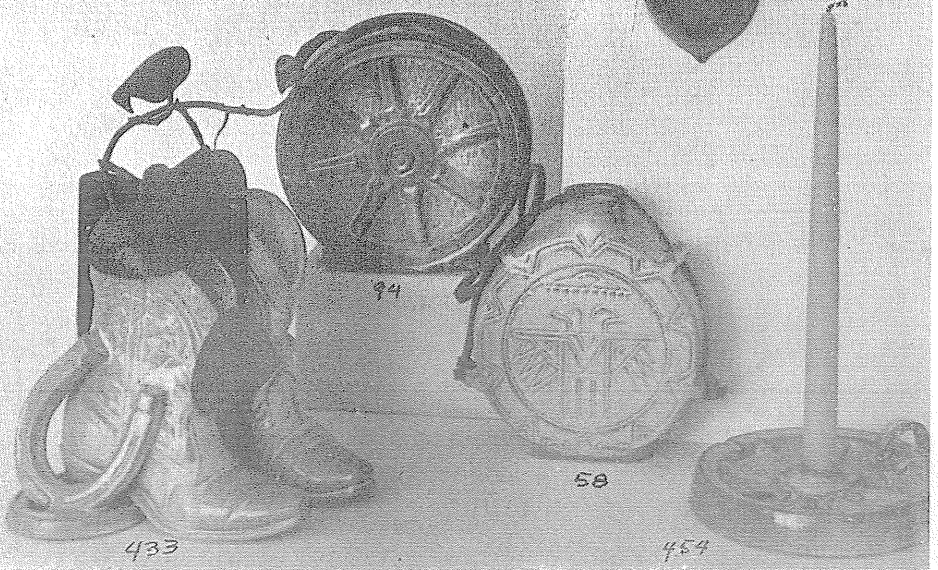
47H 165H 49H 48H 94H 97H



138 133 456 31 32

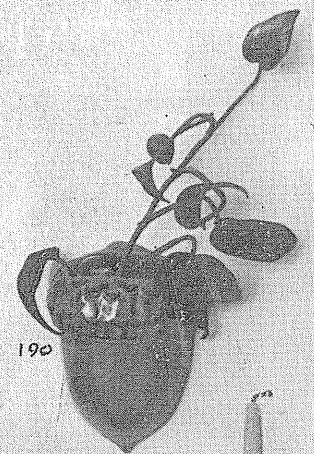


93 90C



94 58 433 454

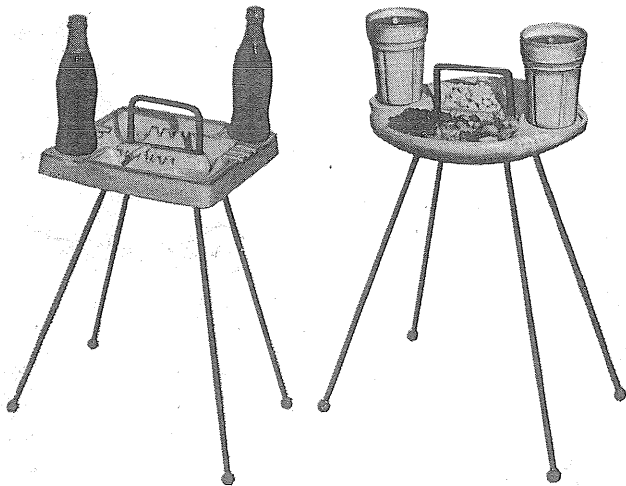
- miniature animals
- miniature vases
- miniature pitchers
- salt and peppers, pair
- 31 —bud vase
- 32 —bud vase
- 59 —Indian design hanging canteen
- 93 —24 oz. pitcher
- 93 set—pitcher and 6 cups
- 90C—3 oz. cups
- 94 —wagon wheel vase, 7 in.
- 133 —cowboy boot vase, 6½ in.
for table or wall
- 135 —Indian head wall plaque
- 138 —circus horse, 6 in.
- 190 —acorn wall vase, 5½ in.
- 433 —cowboy boot planter book ends,
pair
- 454 —wagon wheel candle holder
ash tray
- 456 —ash tray
- 507S—2 boots on leather thong



190



36M—With magazine rack, as shown
34M—Same with square tray



34—10½ in. square

36—12 in. long

1955

CERAMIC AWARD WINNER

Hess Bros. National Contest for
Versatility in Design and Use

FRANKOMA'S

"SERVA-TRAY"

- Designed for the Sheer Pleasure of Casual Living.
- Beautiful Hi-Fired Ceramic Tray. Washes Like a Dish. Will Not Stain or Spot.
- Sturdy Bonderized Wrought Iron. Will Not Rust.
- Refreshment Corners for Drinks.
- For Smokers and Snackers at the T-V. On the Patio—or Anywhere.
- Tray Can't Fall Off When Carrying the Stand.
- Not Top-Heavy — A Joy With Children Around.
- Chair-High, 20 in., Large and Roomy.
- Magazine Rack For Convenience.
- Either Shape in Black, White, Green or Gold.

The colors on the cover are quite accurately reproduced.

FRANKOMA is ovenproof but does not claim to be flame-proof. You will find it very durable and serviceable wherever china or pottery can be used. It is designed to be entirely satisfactory and we would appreciate letting the factory know of any deviation from this standard.

You are a welcomed guest at the factory any time. Should you come during working hours, we will be glad to conduct you through the plant to see FRANKOMA made.

FRANKOMA POTTERY

—ON OLD KILN ROAD—
SAPULPA, OKLAHOMA

FRANKOMA POTTERY

SAPULPA, OKLAHOMA

Wholesale Prices as of January 1, 1955

Please destroy old catalogs. You may have
as many of these new ones as you wish.

TERMS OF SALE: 2% discount in 10 days from date of invoice, net 30 days, f.o.b. factory, Sapulpa, Oklahoma. All invoices come to you with proof of shipment - a "Bill of Lading". In order to gain advantage of the discount, an invoice should be paid within 10 days - it is a CASH discount.

PLEASE NOTE THIS NEW SERVICE: All orders are shipped "cheapest way", unless otherwise specified. Should there be any breakage in the shipment, have the delivering carrier inspect the damage and give you a "concealed damage report" immediately. If you will send us that report and a copy of your paid freight bill, we will give you full credit for the damaged goods, or replace it if necessary. We will be responsible for filing the claim. This new service will take the grief out of "filing claims" and save up to 25% of your freight costs.

Open account credit extended to those with established trade credit; others, C.O.D. or check with order.

Special orders for discontinued ware or colors, not offered in the catalog, may be had at 50% over wholesale prices.

No packing or package charge, except on orders under \$10.00, on which a charge of 10% is made for package, packing and handling.

Per Doz.	Per Doz.	Per Doz.	Per Doz.
<i>Page 4 and 5</i>		<i>Page 6 and 7 (Cont.)</i>	
16 piece starter set 84.00	5W—3 qt. baker 21.00	<i>Page 11</i>	
94A—8 oz. creamer 6.00	5X—bowl 3.60	27 —round vase 9.00	<i>Page 14</i>
94B—8 oz. sugar 6.00	5XL—bowl 6.00	44 —centerpiece 30.00	A4—4 in. pot 3.00
94C—5 oz. cup 4.50	5XS—10 oz. bowl 3.60	54 —shell vase 9.00	A5—5 in. pot 4.50
94D—2 qt. pitcher 12.00	5DA—small creamer 4.50	71 —handled vase 18.00	A6—6 in. pot 6.00
94E—5 in. saucer 4.50	5DB—small sugar 4.50	202—deep bowl 12.00	A7—7 in. pot 7.50
94F—9 in. plate 9.00	4K—butter dish 9.00	205—low bowl 9.00	A8—8 in. pot 9.00
94FL—10½ in. plate 9.60	86—2 qt. jug 12.00	211—crescent bowl 15.00	7 —free form vase 9.00
94G—7 in. plate 4.80	88—1½ qt. jug 12.00	214—free form bowl 12.00	9L —low bowl 12.00
94H—salt and pepper 6.00		228—swan vase 9.00	35 —bowl 6.00
94J—2 cup tea pot 7.20		229—swan vase 21.00	53 —nautilus vase 9.00
94M—16 oz. mug 6.00	<i>Page 8 and 9</i>	231—shell bowl 12.00	57 —cornucopia 9.00
94N—service dish 9.00	16 piece starter set 84.00	305—candle holder, pr. 12.00	200—wedding ring 21.00
94P—16 in. platter 30.00	4A—8 oz. creamer 6.00	804—cross 6.00	212—round bowl 9.00
94Q—13 in. platter 15.00	4B—8 oz. sugar 6.00		215—cornucopia 42.00
94T—6 cup tea pot 12.00	4C—5 oz. cup 4.50	<i>Page 12</i>	218—swirl bowl 12.00
94V—2 qt. baker 15.00	4D—2 qt. pitcher 12.00	6 —free form vase 9.00	219—centerpiece 30.00
94W—3 qt. baker 21.00	4E—5 in. saucer 4.50	43 —bud vase, 8 in. 6.00	222—cornucopia 15.00
94X—16 oz. soup 3.60	4F—10 in. plate 9.60	52 —pedastalled urn 15.00	305—candle holders 12.00
94XL—24 oz. bowl 6.00	4G—7 in. plate 4.80	55 —ball vase 9.00	453—ash tray 6.00
94XO—dessert bowl 3.00	4H—salt and pepper 6.00	58 —free form vase 21.00	
4K—butter dish 9.00	4K—butter dish 9.00	217—centerpiece 30.00	<i>Page 15</i>
80C—12 oz. tumbler 4.50	4M—16 oz. mug 6.00	232—triangle bowl 12.00	miniature animals 3.00
510—ind. sugar 3.00	4N—service bowl 7.50	233—round bowl 9.00	miniature vases 3.00
560—ind. creamer 3.00	4P—13 in. platter 15.00	234—free form bowl 9.00	miniature pitchers 3.00
	4S—bone dish 4.80	420—horse book ends 24.00	salt and peppers, pair 6.00
	4V—1½ qt. baker 15.00	452—ash tray 9.00	31 —bud vase 3.00
<i>Page 6 and 7</i>	4W—3 qt. baker 21.00	455—ash tray 9.00	32 —bud vase 3.00
16 piece starter set 84.00	4X—16 oz. bowl 4.80		59 —hanging canteen 9.00
5A—12 oz. creamer 6.00	4XU—covered bowl 9.00	<i>Page 13</i>	93 —24 oz. pitcher 9.00
5B—12 oz. sugar 6.00	4Y—spoon holder 6.00	4 —cactus vase, 7 in. 9.00	93 set—pitcher & 6 cups 21.00
5C—7 oz. cup 4.50	4Z—salad bowl 6.00	45 —slender bowl, 12 in. 12.00	90C—3 oz. cups 2.40
5CL—12 oz. mug 5.10	5L —tumbler 4.50	63 —pillow vase, 7 in. 9.00	94 —vase, 7 in. 9.00
5D—3 qt. pitcher 18.00	80—2 qt. pitcher 12.00	68 —cube vase, 5 in. 9.00	133 —cowboy boot vase 9.00
5E—6 in. saucer 4.50	87—1 qt. pitcher 9.00	203—cactus bowl, 10 in. 12.00	135 —wall plaque 3.00
5F—10½ in. plate 9.60	205—service bowl 9.00	304—dbl. candle hlds., pr. 12.00	138 —circus horse, 6 in. 6.00
5G—8 in. plate 6.00	214—service bowl 12.00	60B—goose vase, 6 in. 9.00	190 —acorn wall vase 6.00
5GS—7 in. plate 4.80	231—service bowl 12.00	458—8 in. ash tray 9.00	433 —book ends 30.00
5HS—salt and pepper 6.00		97D—2 qt. pitcher 12.00	454—c. h. ash tray 9.00
5L—12 oz. tumbler 4.50	<i>Page 10</i>	97M—16 oz. mug 6.00	456 —ash tray 3.60
5M—16 oz. mug 6.00	113—fan dancer 30.00	97U—10 oz. ramkin 6.00	507S—2 boots 6.00
5ND—cheese dip 15.00	304—candle holders, pr. 12.00	97V—2 qt. baker 12.00	
5NS—9 in. bowl 12.00	430—book ends, pair 24.00	434—duck book ends 48.00	<i>Page 16</i>
5P—16 in. platter 30.00	114—seated puma 9.00	464—10½ in. ash tray 30.00	36M—with mag. rack 45.00
5Q—13 in. platter 15.00	116—reclining puma 21.00		34M—same/w sq. tray 45.00
5S—gravy boat 9.00	77—tall vase 42.00		34—10½ in. square 39.00
5T—6 cup tea pot 12.00	77A—tall pitcher 42.00		36—12 in. long 39.00
5TL—12 cup pot 21.00			
5V—2 qt. baker 15.00			

