



7V-2 QT. BAKER-2.75

- 7FL-10" PLATE-1.60
- 7F-9" PLATE-1.50
- 7G-7" PLATE-.80
- 7E-5" SAUCER-.75



7D-60 OZ. PITCHER-2.50



7W-3 QT. BAKER-3.75



7B-6 OZ. SUGAR-1.00



7A-6 OZ. CREAMER-1.00



7C-5 OZ. CUP-.75



7M-14 OZ. MUG-1.10



7WL-5 QT. BAKER-5.00



7U-10 OZ. BAKER-1.00



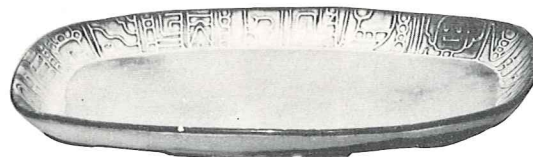
7HS-SALT & PEPPER-1.00 PR.



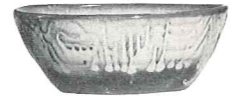
7CL-8 OZ. MUG-.80



7XO-8 OZ. FRUIT-.60



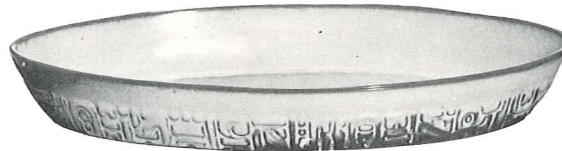
7QS-13" STEAK PLATTER (SHALLOW PLATTER)-2.00



7X-14 OZ. CHILI-SOUP-.80



7PS-9" TRAY-1.25



7Q-13" DEEP PLATTER-2.50



7XL-20 OZ. SALAD-1.00



7T-6 CUP TEA POT-2.50



7FC-15" CHOP PLATE-7.00



7N-1 QT. VEGETABLE BOWL-1.50



7P-17" DEEP PLATTER-5.00



7J-2 CUP TEA POT-1.20

THIS PAGE AVAILABLE IN PRAIRIE GREEN, DESERT GOLD, WHITE SAND.

SIZES ARE APPROXIMATE AND MAY VARY SLIGHTLY.