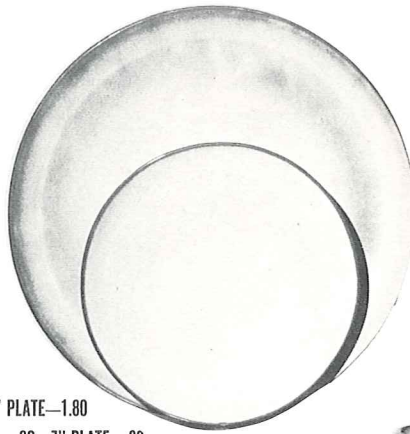




4K—BUTTER DISH—1.50



6F—10" PLATE—1.80

6G—7" PLATE—.80



80—2 QT. PITCHER—2.50



6V—2½ QT. BAKER—3.50



6C—6 OZ. CUP—.75

6E—5" WELLED SAUCER—.75



6H—SALT & PEPPER—1.00 PR.



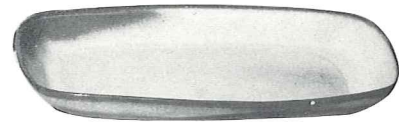
6CL—10 OZ. DOUBLE COFFEE—.80



6U—18 OZ. BAKER-FOR-TWO—2.00  
A COVERED CANDY DISH



6A—9 OZ CREAMER—1.00



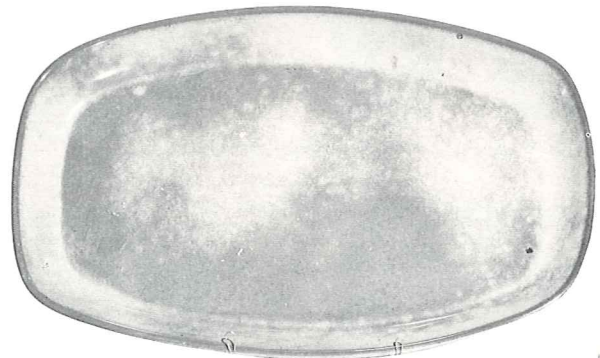
5PS—9" TRAY—1.25



6N—1 QT. BOWL—1.50

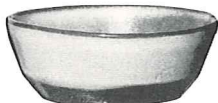


6B—9 OZ. SUGAR WITH LID—1.00



5QS—13" STEAK PLATE (SHALLOW PLATTER)—2.00

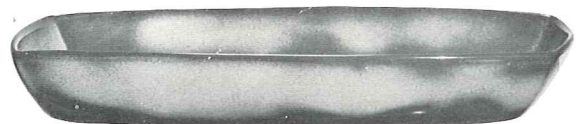
6P—11" STEAK PLATE (SHALLOW PLATTER)—1.50



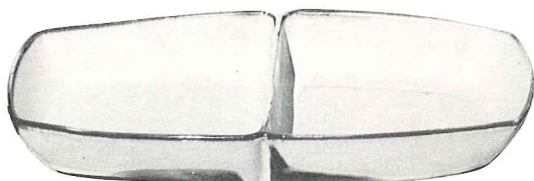
6X—14 OZ. CHILI-SOUP—.80



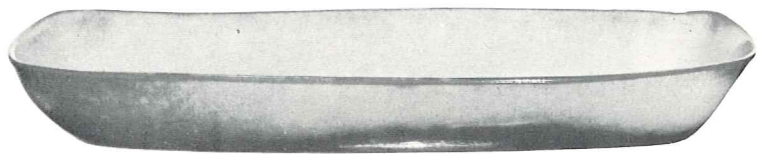
5L—12 OZ TUMBLER—.75



50—13" DEEP PLATTER—2.50



5QD—13" DIVIDED BOWL—2.50



5P—17" DEEP PLATTER—5.00

THIS PAGE AVAILABLE IN PEACH GLOW, PRAIRIE GREEN, WOODLAND MOSS. SIZES ARE APPROXIMATE AND MAY VARY SLIGHTLY.