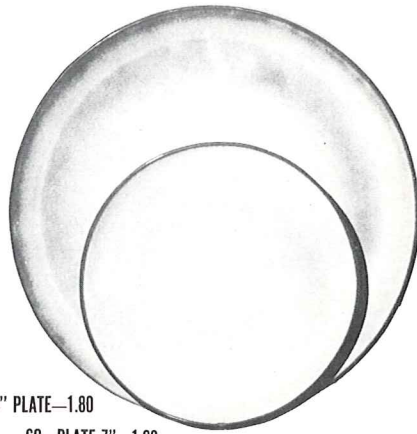


4K—BUTTER DISH—2.00



6F—10" PLATE—1.80

6G—PLATE 7"—1.00



6B—SUGAR WITH LID—1.50



6A—9 OZ CREAMER—1.00

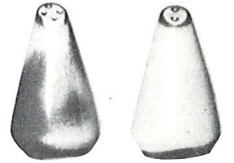


6V—BAKER 2½ QT.—4.00



6C—6 OZ. CUP—.75

6E—5" WELLED SAUCER—.75



6H—SALT & PEPPER—1.50



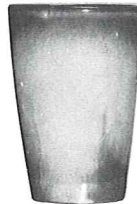
6CL—DOUBLE COFFEE—1.00



6VS—1½ QT. BAKER—3.00



5LC—6 OZ. JUICE—.75



5L—12 OZ TUMBLER—.75



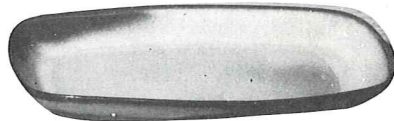
81—1 QT. PITCHER—1.80



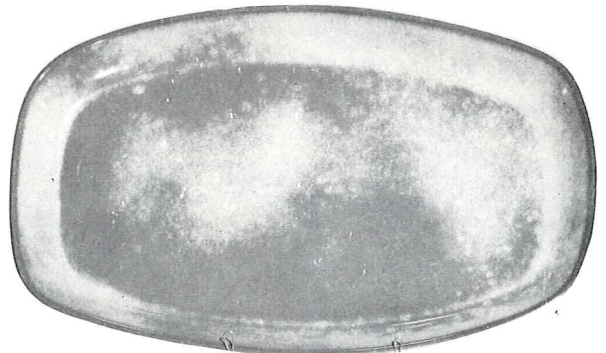
80—2 QT. PITCHER—2.50



6U—18 OZ. BAKER-FOR-TWO—2.00  
A COVERED CANDY DISH



5PS—9" TRAY—1.25

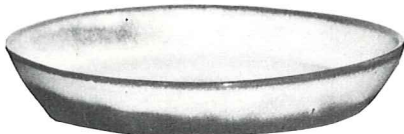


5QS—13" STEAK PLATE (SHALLOW PLATTER)—2.00

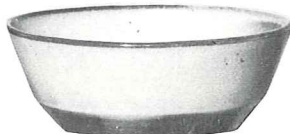
6P—STEAK PLATE 11"—1.60



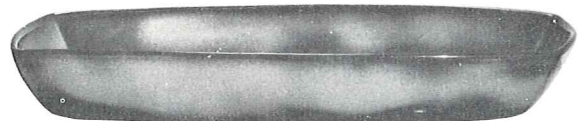
6X—CHILI-SOUP 14 OZ.—1.00



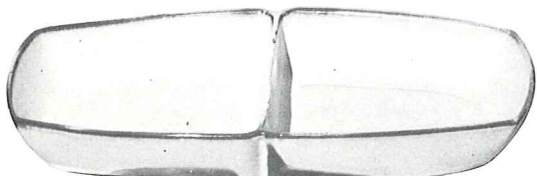
91—10" BAKING DISH—2.00



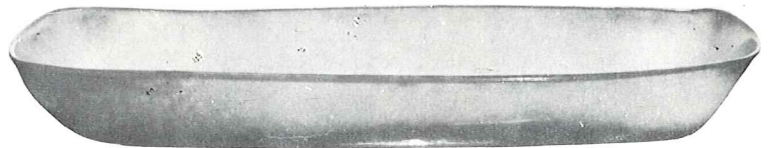
6N—1 QT. BOWL—1.50



5Q—13" DEEP PLATTER—2.50



5QD—13" DIVIDED BOWL—2.50



5P—17" DEEP PLATTER—5.00

THIS PAGE AVAILABLE IN PEACH GLOW, PRAIRIE GREEN, WOODLAND MOSS. SIZES ARE APPROXIMATE AND MAY VARY SLIGHTLY.