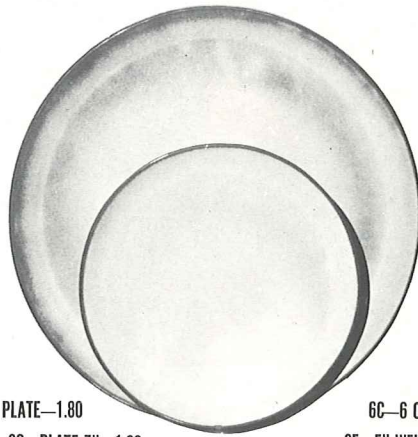


4K—BUTTER DISH—2.00



6F—10" PLATE—1.80

6G—PLATE 7"—1.00



6B—SUGAR WITH LID—1.50



6A—9 OZ CREAMER—1.00

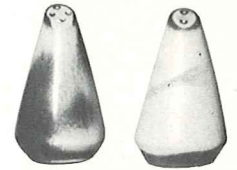


6VT—3 QT. TUREEN—4.00



6C—6 OZ. CUP—.75

6E—5" WELLED SAUCER—.75



6H—SALT & PEPPER—1.50



6V—BAKER 2½ QT.—4.00



5LC—6 OZ. JUICE—.75



5L—12 OZ TUMBLER—.75



6CL—DOUBLE COFFEE—1.00



80—2 QT. PITCHER—2.50



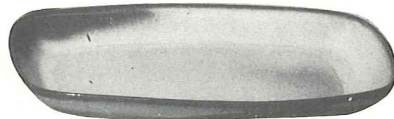
81—1 QT. PITCHER—1.80



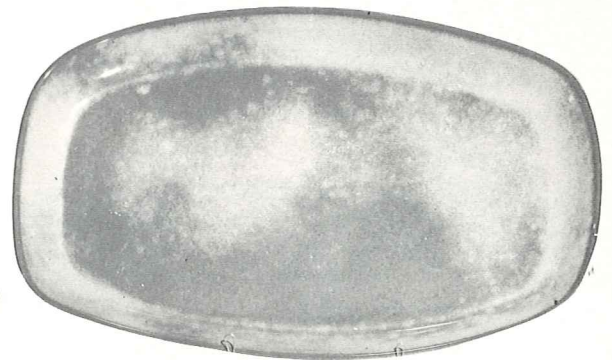
6T—6 CUP TEA POT—2.50



6VS—1½ QT. BAKER—3.00



5PS—9" TRAY—1.25



5QS—13" STEAK PLATE (SHALLOW PLATTER)—2.00

6P—STEAK PLATE 11"—1.60



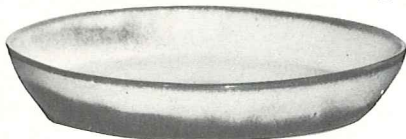
6U—18 OZ. BAKER-FOR-TWO—2.00
A COVERED CANDY DISH



BP—6 OZ. BEAN POT—.75



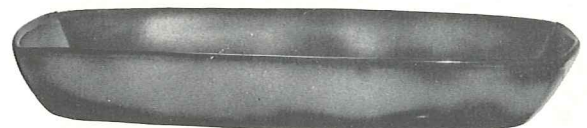
6X—CHILI-SOUP 14 OZ.—1.00



91—10" BAKING DISH—2.00

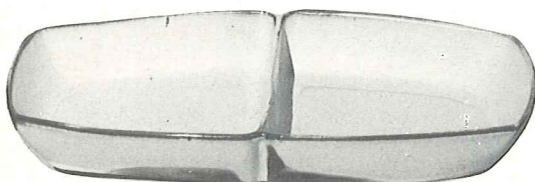


6N—1 QT. BOWL—1.50

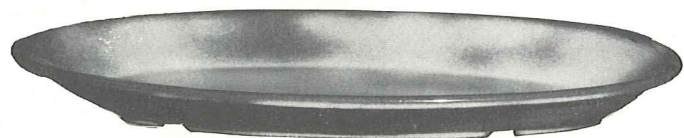


5Q—13" DEEP PLATTER—2.50

5P—17" DEEP PLATTER—5.00



5QD—13" DIVIDED BOWL—2.50



TP—17" TURKEY PLATTER—5.00

THIS PAGE AVAILABLE IN PEACH GLOW, PRAIRIE GREEN, WOODLAND MOSS. SIZES ARE APPROXIMATE AND MAY VARY SLIGHTLY.