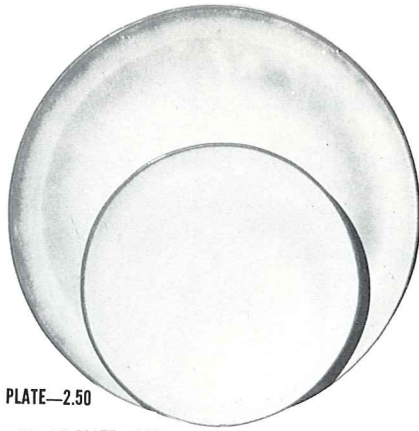


*4K—BUTTER DISH—2.50



6F—10" PLATE—2.50

6G—7" PLATE—1.25



*6B—SUGAR WITH LID—2.00



*6A—9 OZ. CREAMER—1.50

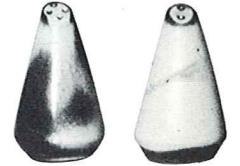


*6VT—2½ QT. TUREEN—6.00



6C—CUP—1.20

6E—5" WELLED SAUCER—1.20



*6H—SALT & PEPPER—2.00



*6V—2½ QT. BAKER—6.00



*5LC—6 OZ. JUICE—1.00



*5L—12 OZ. TUMBLER—1.20



*81—1 QT. PITCHER—2.50



*80—2 QT. PITCHER—4.00



*6T—6 CUP TEAPOT—3.50



*6VS—1½ QT. BAKER—4.50



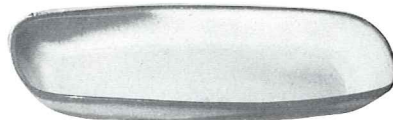
*6J—2 CUP TEAPOT—2.50



*6S—TWO SPOUT GRAVY—2.50



*6U—18 OZ. BAKER FOR TWO—3.00
A COVERED CANDY DISH



*5QS—13" STEAK PLATE (SHALLOW PLATTER)—2.50

*6P—11" STEAK PLATE—2.00

*5PS—9" TRAY—1.50



6X—14 OZ. CHILI SOUP—1.25

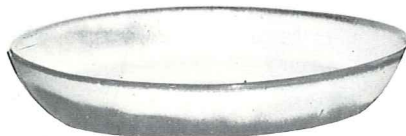
6XS—10 OZ. FRUIT—1.00



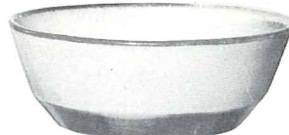
*BP—6 OZ. BEAN POT
OR CUSTARD—1.00



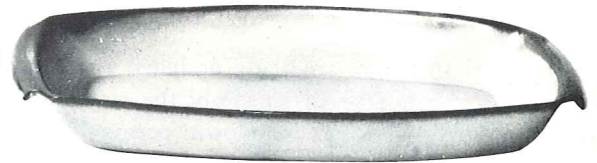
*BP—6 OZ. BEAN POT
OR CUSTARD/WITH LID—1.75



*91—10" BAKING DISH—2.50

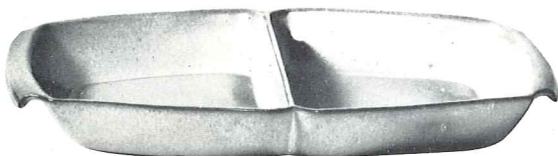


*6N—1 QT. BOWL—2.00

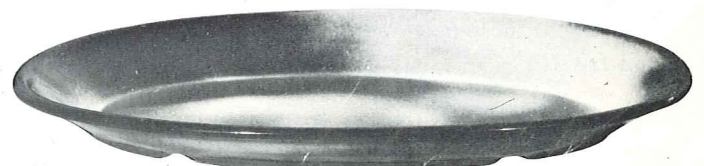


5P—17" DEEP PLATTER—7.50

5Q—13" DEEP PLATTER—3.50



5QD—13" DIVIDED BOWL—3.50



TP—17" OVAL PLATTER—7.50

THIS PAGE AVAILABLE IN PEACH GLOW, PRAIRIE GREEN, WOODLAND MOSS AND WHITE SAND EXCEPT WHERE NOTED *

* AVAILABLE IN ALL COLORS—ADD 50% FOR FLAME

SIZES ARE APPROXIMATE AND MAY VARY SLIGHTLY.