

AVAILABLE IN 1977

COLOR: DUSTY PINK

5 OZ. COFFEE MUG \$3.00 EACH



1977 ELEPHANT MUG

The original "Elephant Mug" was created for the National Republican Womens Club and copyrighted by Frankoma in 1969 and patented in 1970. The "Donkey Mug" was created in 1975 copyrighted and patented.

Now each year these mugs are produced by Frankoma as a stock item. The current mugs are only available during that year — Each year the color is different.

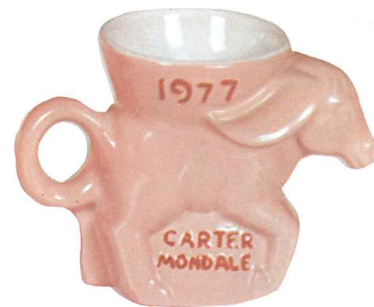
© F.P. 1975, U.S. Pat. No. D605,739

© F.P. 1969, U.S. Pat. No. D214,868

AVAILABLE IN 1977

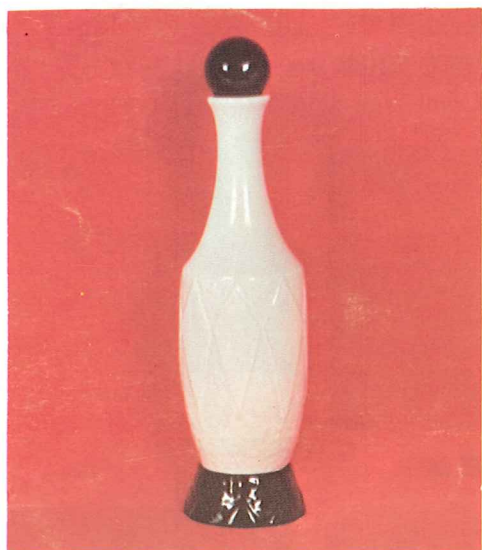
COLOR: DUSTY PINK

5 OZ. COFFEE MUG \$3.00 EACH



1977 DONKEY MUG

Past Issues No Longer Available From Factory



Pictured is a 13" Limited Edition Vase, the ninth in a series. The mold is signed by the artist, Joniece Frank. Each piece is numbered and the master mold will be destroyed after 3,000 impressions. No seconds are sold. The color is Black and White.

No. V-9

\$10.00 Each



There has been much said during the last few years about "lead poisoning" from using pottery dishes and containers. Shown here is the Official Seal of Certification, that this ware is ALL safe from lead poisoning. • Practically all pottery wares made in the U.S. are so certified, so . . .

Buy Frankoma!
Be Safe • Buy American

You can dress FRANKOMA "up or down," for it is both useful and beautiful, whatever the occasion. All the extra serving pieces, as well as the centerpiece and accessories are made to match in color and texture, and they are ovenproof and dish-washer proof.

Frankoma is ovenproof but does not claim to be flameproof or chipproof. You will find it very durable and serviceable wherever china or pottery can be used. It is designed to be entirely satisfactory and we would appreciate letting the factory know of any deviation from this standard.

You are a welcomed guest at the factory any time. Should you come during working hours, we will be glad to conduct you through the plant to see Frankoma made.

• Prices subject to change without notice.

Prices shown are suggested retail.

Prices may vary due to shipping costs.

FRANKOMA POTTERY, INC.

— On Frankoma Road —

P. O. Box 789 • 918-224-5511

Sapulpa, Oklahoma 74066