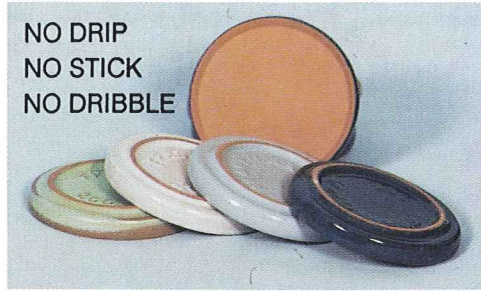


# Gourmet Items

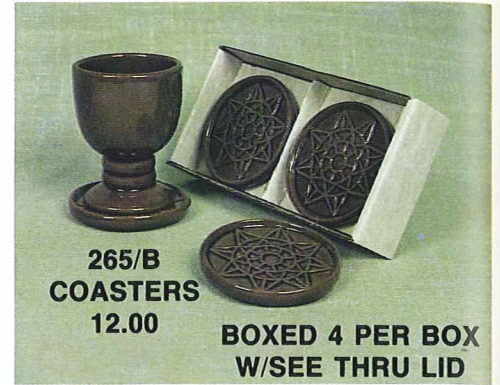


5NC/D 22.00



NO DRIP  
NO STICK  
NO DRIBBLE

265P - 3 1/2" Terra Cotta w/ Color Coaster 2.50  
Only in TC & Colors



265/B  
COASTERS  
12.00

BOXED 4 PER BOX  
W/SEE THRU LID



\* Milk Can Salt & Pepper  
MC - 4 1/2" 8.00 pr.



\* 4 1/2" Salt & Pepper  
26-H - 7.00 pr.



\* 6 oz. Jelly Jar w/Lid  
802 - 5.00



\* TISP-Sugar Pack  
Holder - 3.50

\* RH - 4 1/2" Ring  
Holder/Apple Bake - 4.00



72 SET  
24.00

PASTA  
CANNISTER SET



\* 247—SOUP LADLE 7.50  
(Not Available in Flame)

245—2 QT. SOUP TUREEN 10.00  
245/W—TUREEN W/WARMER 17.50  
245/P—TUREEN W/PLATE 16.00

246—3 QT. SOUP TUREEN 14.50  
246/W—TUREEN W/WARMER 22.00  
246/P—TUREEN W/PLATE 20.50



4V—2 QT. BAKER/BEAN POT 10.00  
4V/W—BAKER/W WARMER SET 17.50

\* 4V  
3.50

4W—3 QT. BAKER/BEAN POT 14.50  
4W/W—BAKER/W WARMER SET 22.00



6U  
18 OZ. BAKER  
7.00

6VS—1 1/2 QT. BAKER 10.00  
6VS/W BAKER & WARMER SET 17.50

6V—2 1/2 QT. BAKER 14.50  
6V/W BAKER & WARMER SET 22.00



## GREASE CONTAINER

Tired of messy grease jars? Then try Frankoma's idea! Insert empty 1 lb. coffee can, pour in bacon drippings or hot fat. Handy storage for re-use or if you wish, just remove filled can and dispose of neatly. Comes with metal strainer.

26GC

15.00

Available in Standard Frankoma Colors PLUS Peach & DWTC - except where noted - ADD 50% FOR FLAME

Color Charts pages 2 & 3

\* SOLID COLORS ONLY (sizes are approximate & may vary)